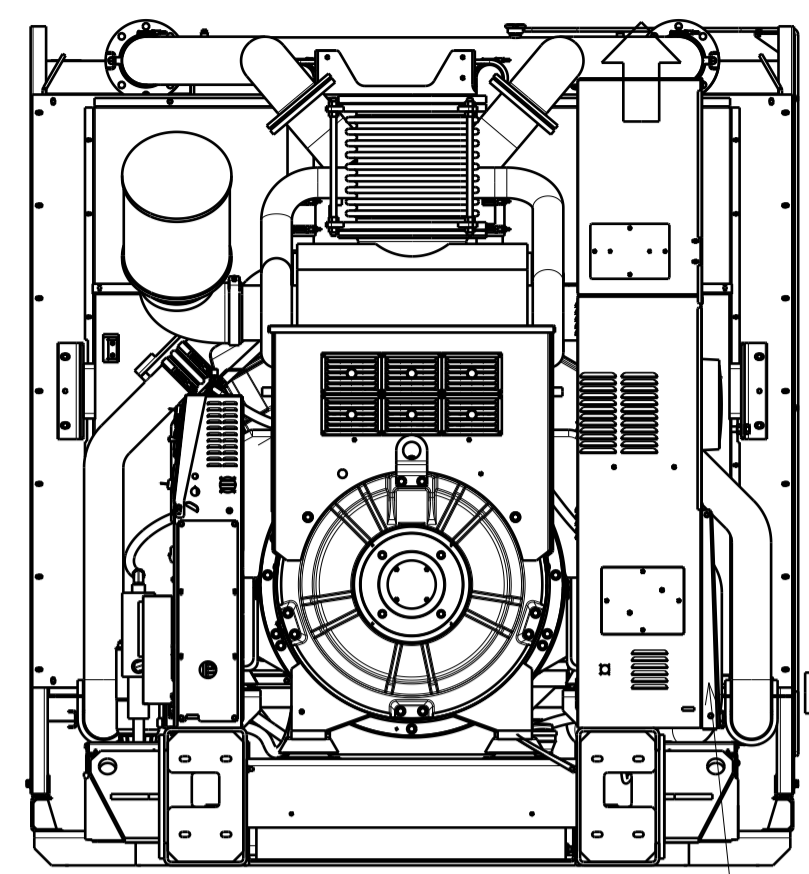
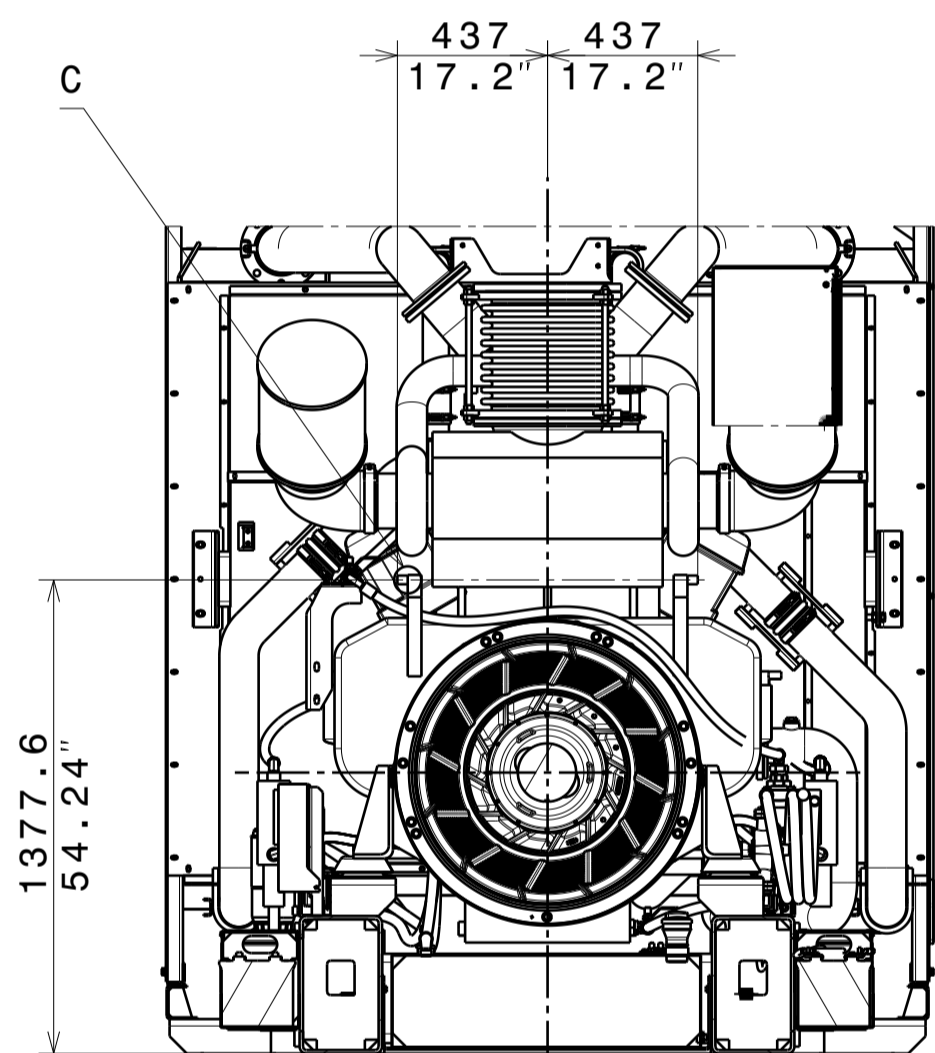
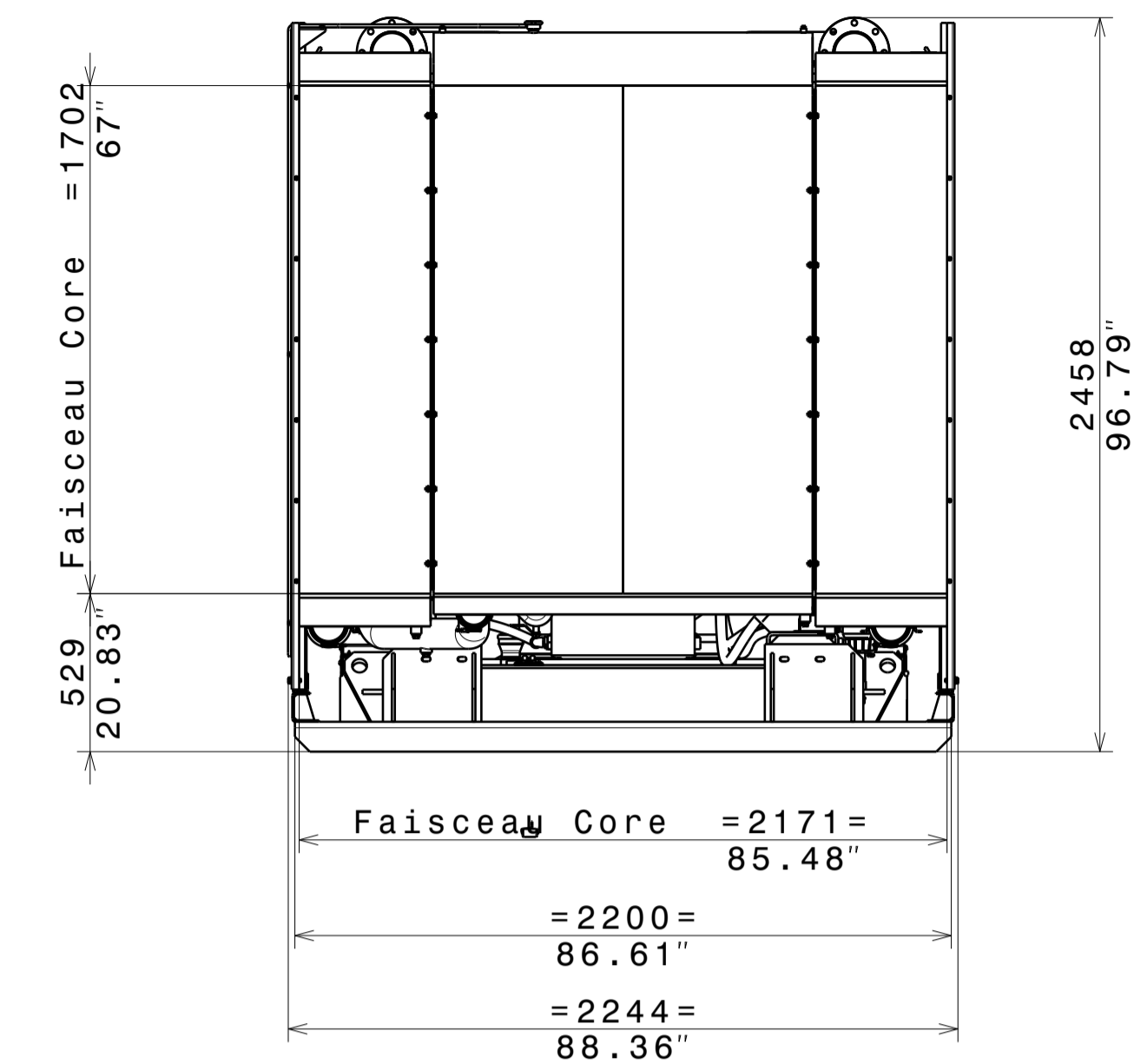
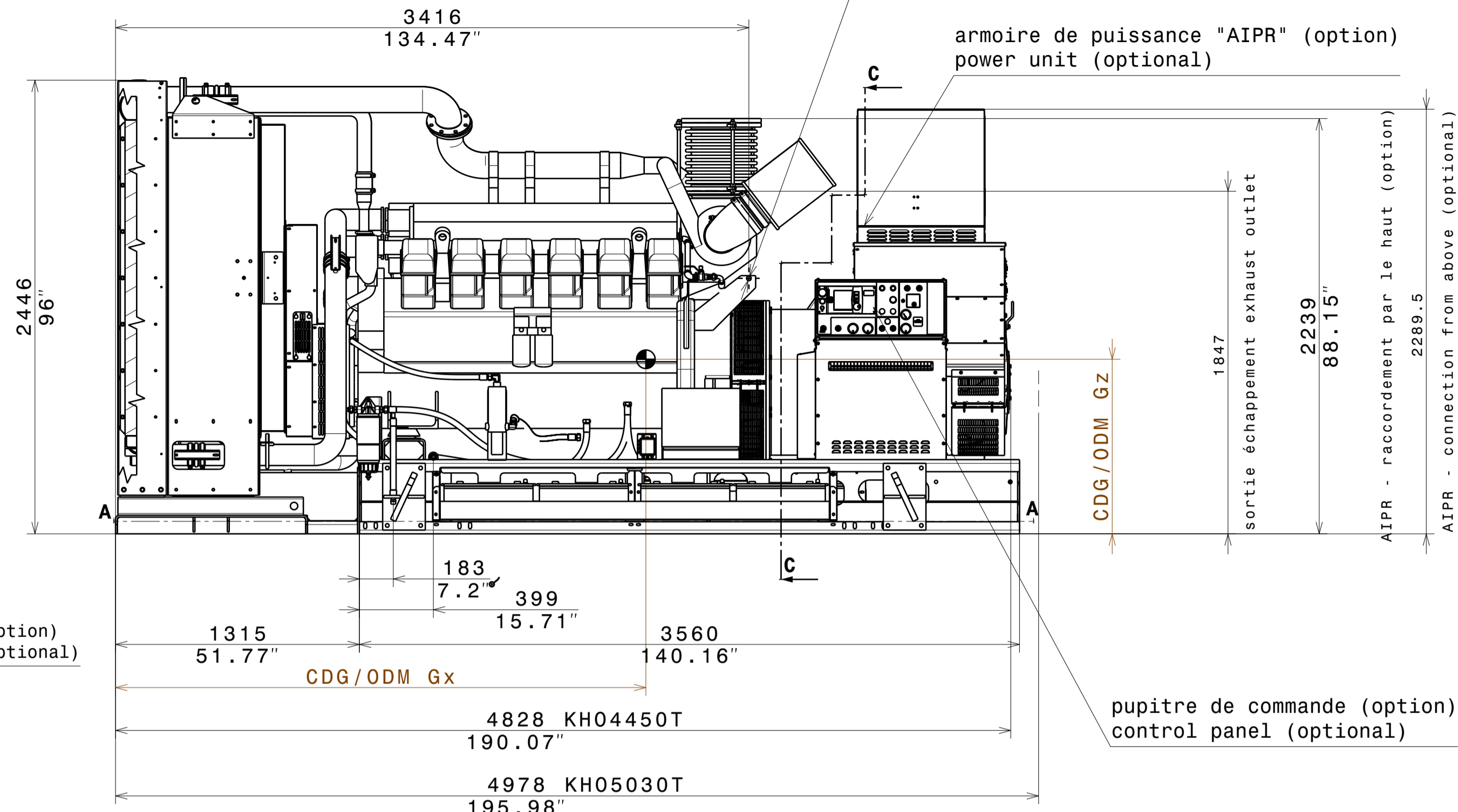


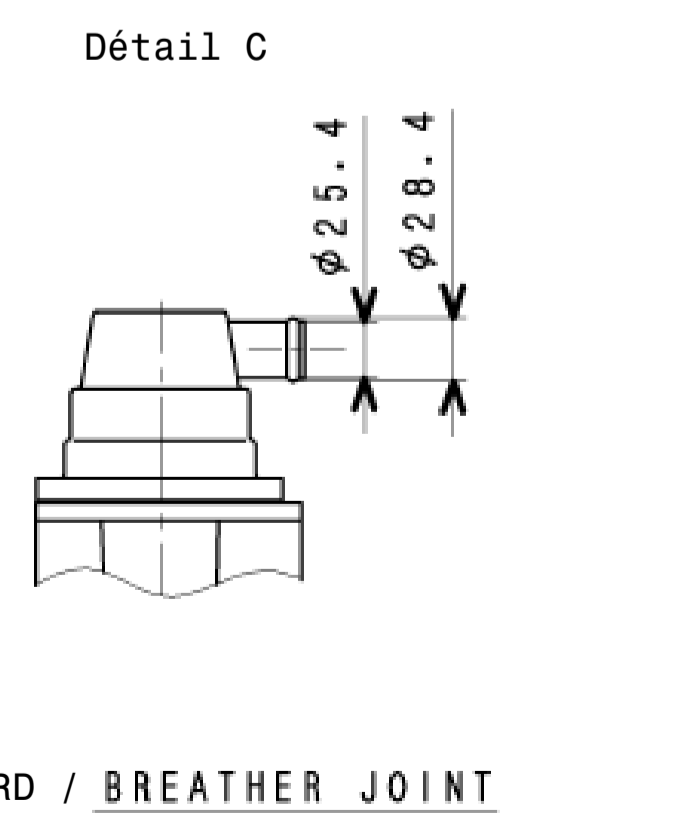
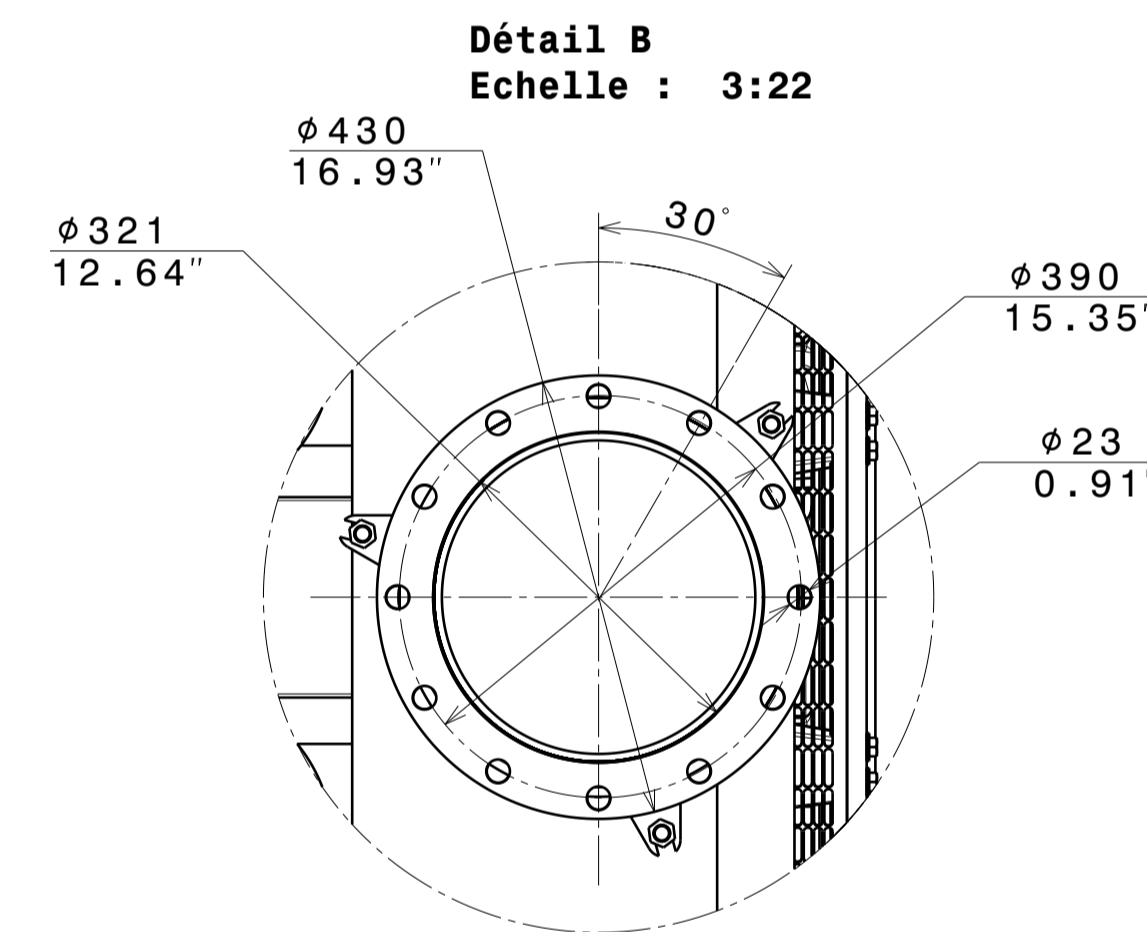
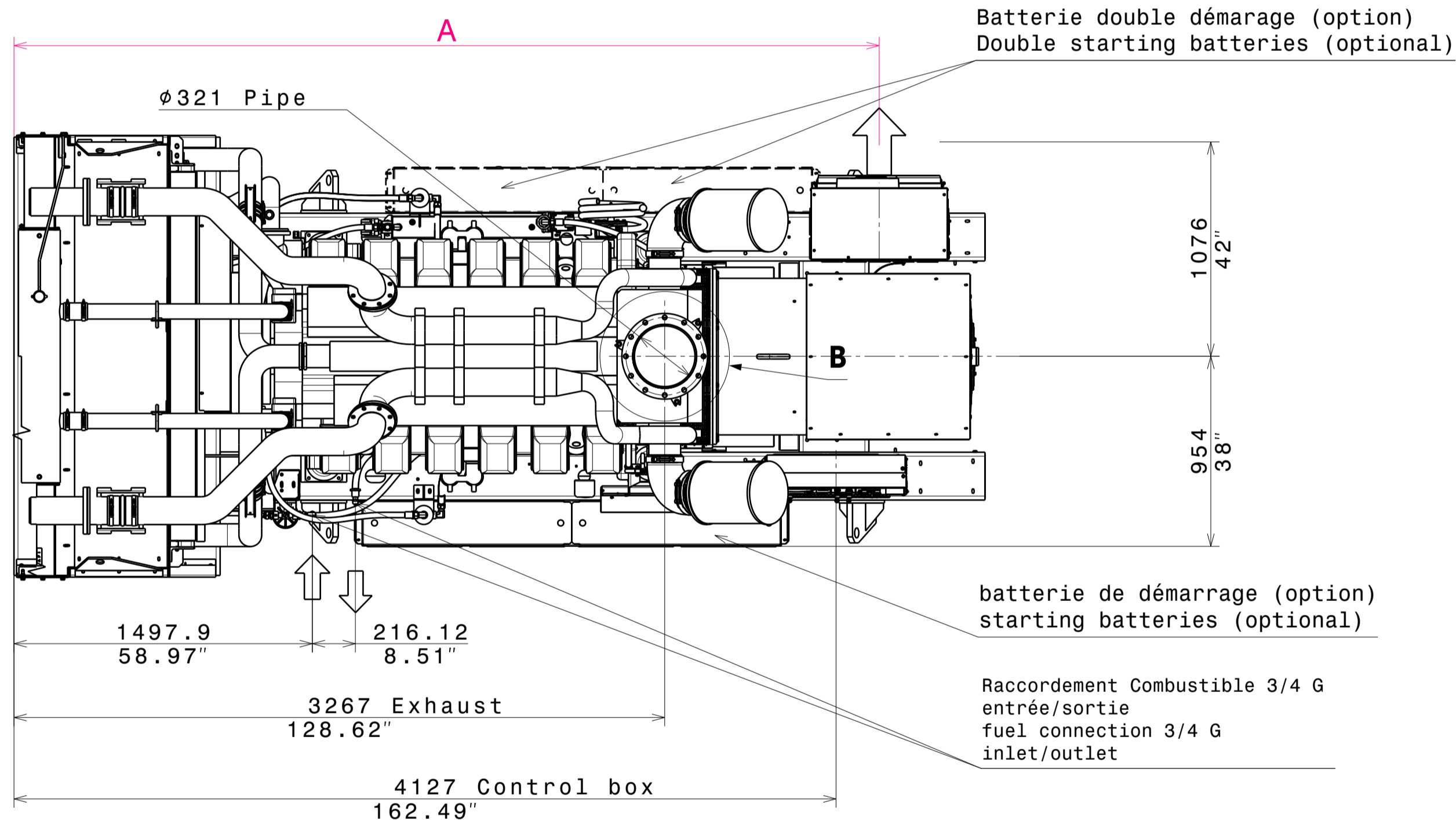
RENIFLARD/BREATHER JOINT #25.4



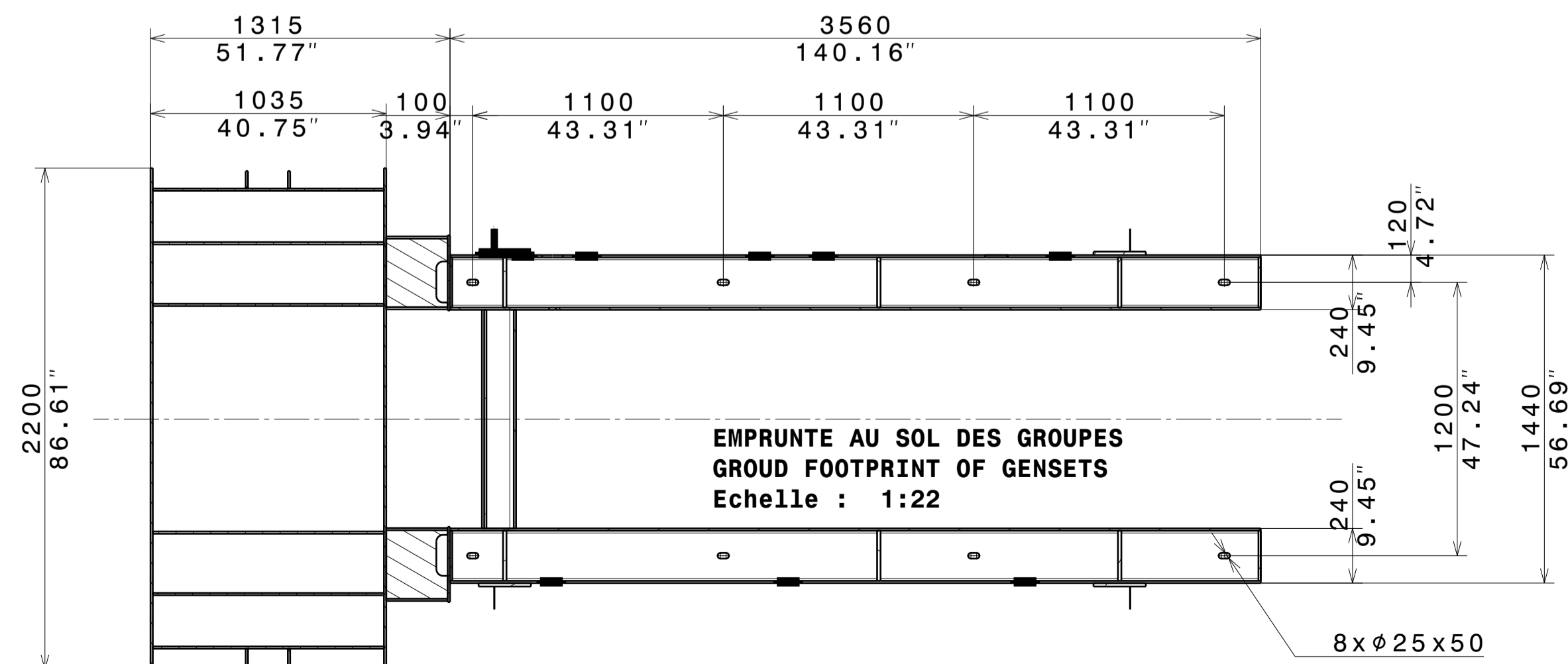
AIPR- raccordement par le bas (option)  
AIPR - connection from below (optional)



Coupe C-C  
Echelle : 1:22



RENIFLARD / BREATHER JOINT



Moteur Engine	Alternateur Generator	Masse(kg) Weight(lbs)		A(mm/inch)	Centre de gravité - Odm Center of gravity - Wet	
		A vide/Dry	Odm/Wet		Gx(mm/inch)	Gz(mm/inch)
MI S12RPTAA2	KH04450T	10870	11770	4439	2860	941
MI S12RPTAA2	KH5090T	11150	12050	4344	2710	941

A	IND14512	PROTO	05/03/20	BERNARD R	Date	Visa
Rev	Désignation de la modification (Description of change)	Statut (Status)	Dessiné par (Drawn by)	Verificateur (Checked by)		
Matière (Material)	Tôle(Sheetmetal) :Xmm - Acier(Steel):S235			Format (Size)	A1	
Revêtement (Coating)	Voir code article(See part number description)			Echelle (Scale)	1/22	
Tolérance (Tolerance)	NF ISO 13920-c1.A-E			Folio (Sheet)	1/1	
Désignation : (Title)	T1650 EX1 50HZ S12R PTAA2 24V				Masse (Weight) (Kg)	
KOHLER SDMO		30001530101		Rev. : A		

270 rue de Kerperven CS40047 29001 BREST-GUILFARVAS Cedex © FRANCE  
CE PLAN EST LA PROPRIETE DE SDMO. IL NE PEUT ETRE REPRODUIT, UTILISE OU COMMUNIQUE SANS SON AUTORISATION  
THIS DRAWING IS UNDER PROPERTY OF THE COMPANY. IT CANNOT BE PRINTED, USED OR COMMUNICATED WITHOUT ITS AUTHORIZATION