

MOTEUR / ENGINE	ALTERNATEUR / ALTERNATOR	CHASSIS SANS RESERVOIR GASOIL / FRAME WITHOUT FUEL TANK					
		MASSE / WEIGHT (kg / lbs) +/- 5%		COG (mm / inch) A vide / Dry		COG (mm / inch) OdM / Wet	
		A vide / Dry	OdM / Wet	CG Horizontal	CG Vertical	CG Horizontal	CG Vertical
DOOSAN P126 TI / TI-II	KH01381T	2312 / 5097	2392 / 5273	1637 / 64.44	667 / 26.25	1624 / 63.93	667 / 26.25
DOOSAN P126 TI / TI-II	KH01721T	2436 / 5370	2516 / 5546	1710 / 67.32	667 / 26.25	1708 / 67.24	667 / 26.25
DOOSAN P126 TI / TI-II	KH02214T	2566 / 5657	2646 / 5833	1733 / 68.22	667 / 26.25	1719 / 67.67	667 / 26.25

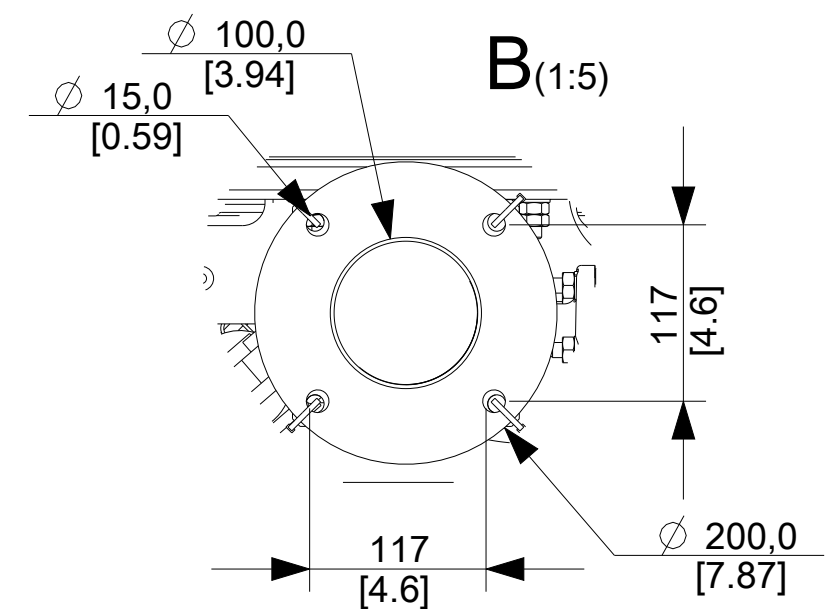
MOTEUR / ENGINE	ALTERNATEUR / ALTERNATOR	CHASSIS AVEC RESERVOIR GASOIL / FRAME WITH FUEL TANK					
		MASSE / WEIGHT (kg / lbs) +/- 5%		COG (mm / inch) A vide / Dry		COG (mm / inch) OdM / Wet	
		A vide / Dry	OdM / Wet	CG Horizontal	CG Vertical	CG Horizontal	CG Vertical
DOOSAN P126 TI / TI-II	KH01381T	2427 / 5350	2859 / 6303	1630 / 64.17	642 / 25.27	1605 / 63.18	584 / 22.99
DOOSAN P126 TI / TI-II	KH01721T	2550 / 5621	2983 / 6576	1700 / 66.92	643 / 25.31	1677 / 66.02	588 / 23.14
DOOSAN P126 TI / TI-II	KH02214T	2681 / 5910	3113 / 6862	1723 / 67.83	644 / 25.35	1688 / 66.45	591 / 23.26

(1) Seulement avec châssis réservoir fuel / Only with fuel tank frame

- Voir folios suivants pour informations complémentaires / See following sheets for additional informations.

- Les noms des vues correspondent aux différentes faces du groupe électrogène / The names of the views correspond to the different sides of the generating set.

SORTIE ECHAPPEMENT / EXHAUST OUTLET
(Détail contre-bride / counter-flange detail)



CET ASSEMBLAGE OU PIECE DOIT ETRE CONFORME A LA SPECIFICATION PEP-RML-001
THIS ASSEMBLY OR PART MUST COMPLY WITH SPECIFICATION PEP-RML-001

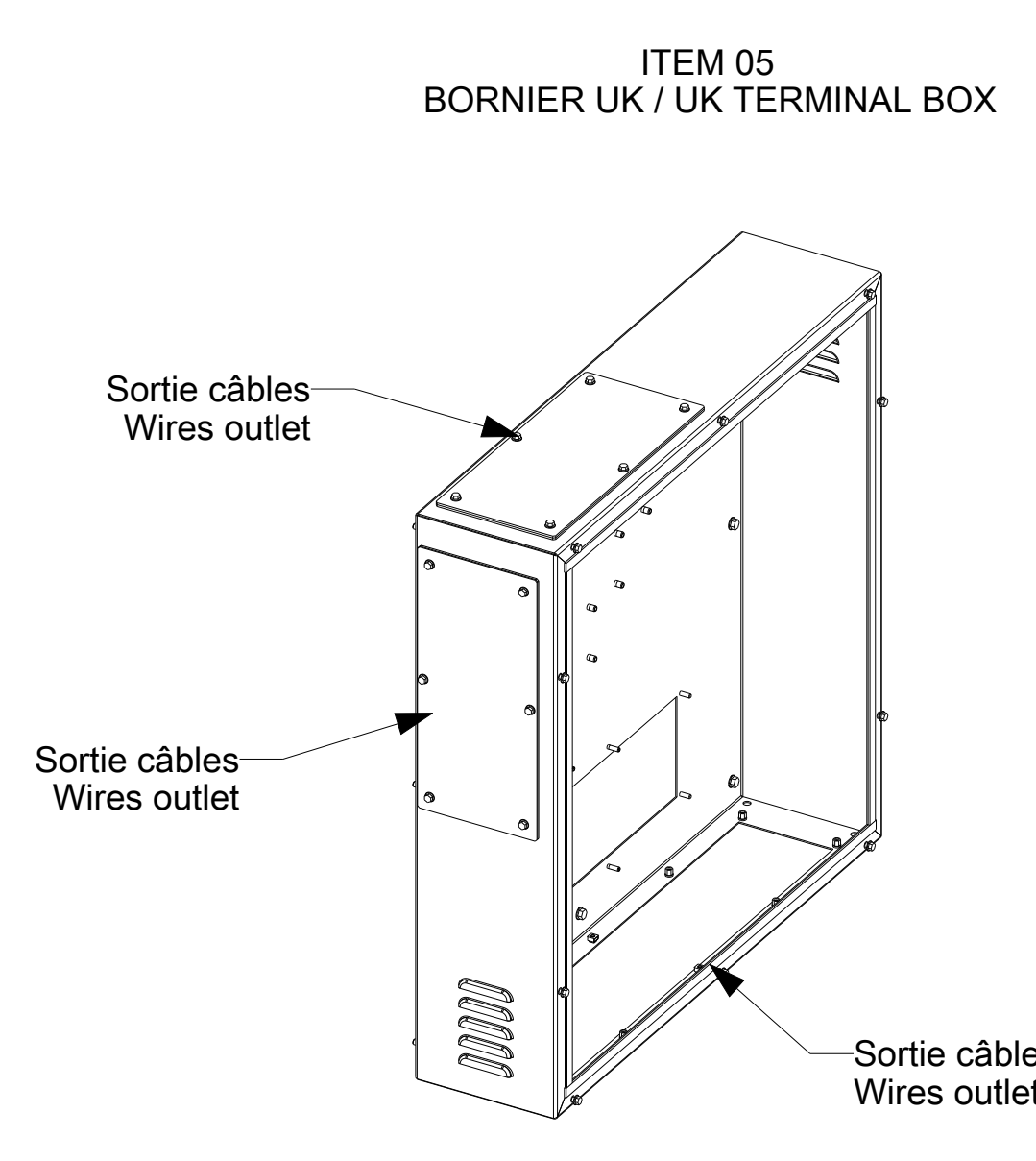
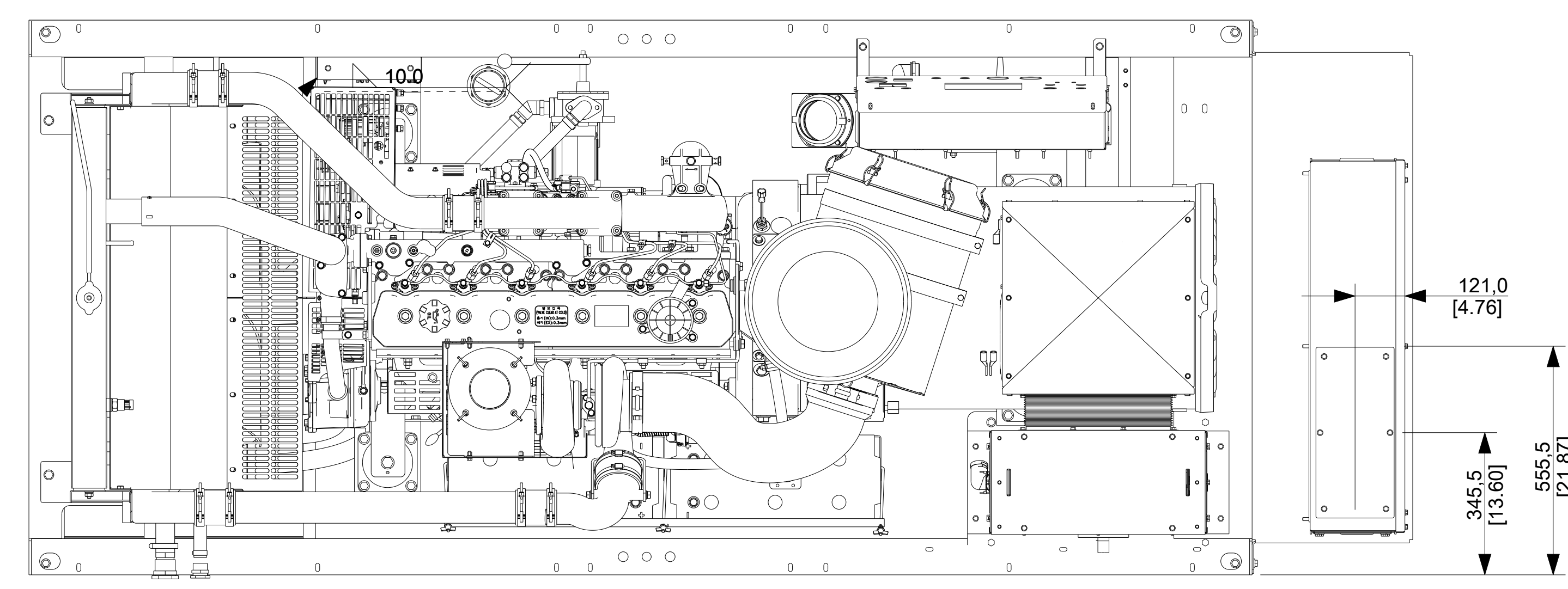
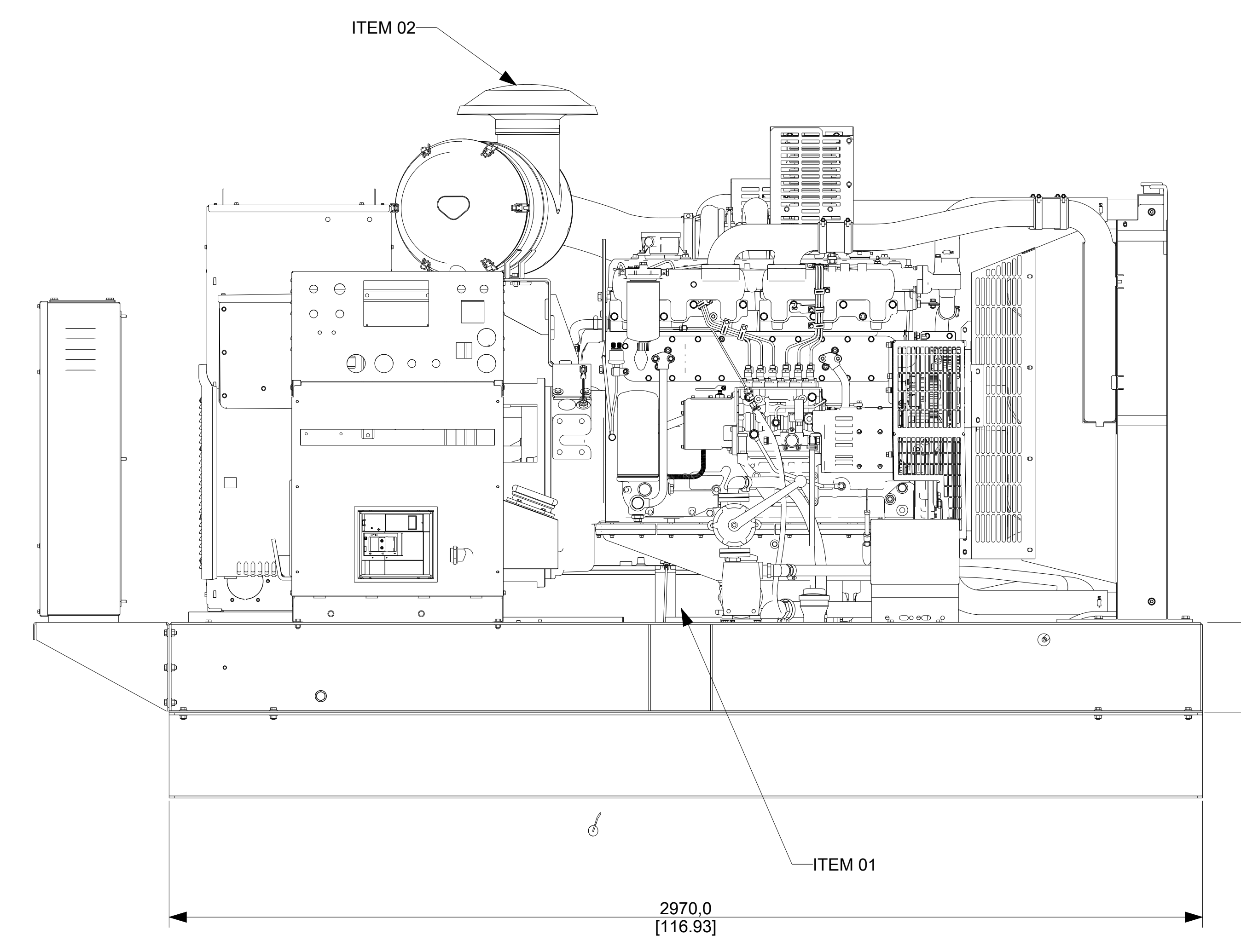
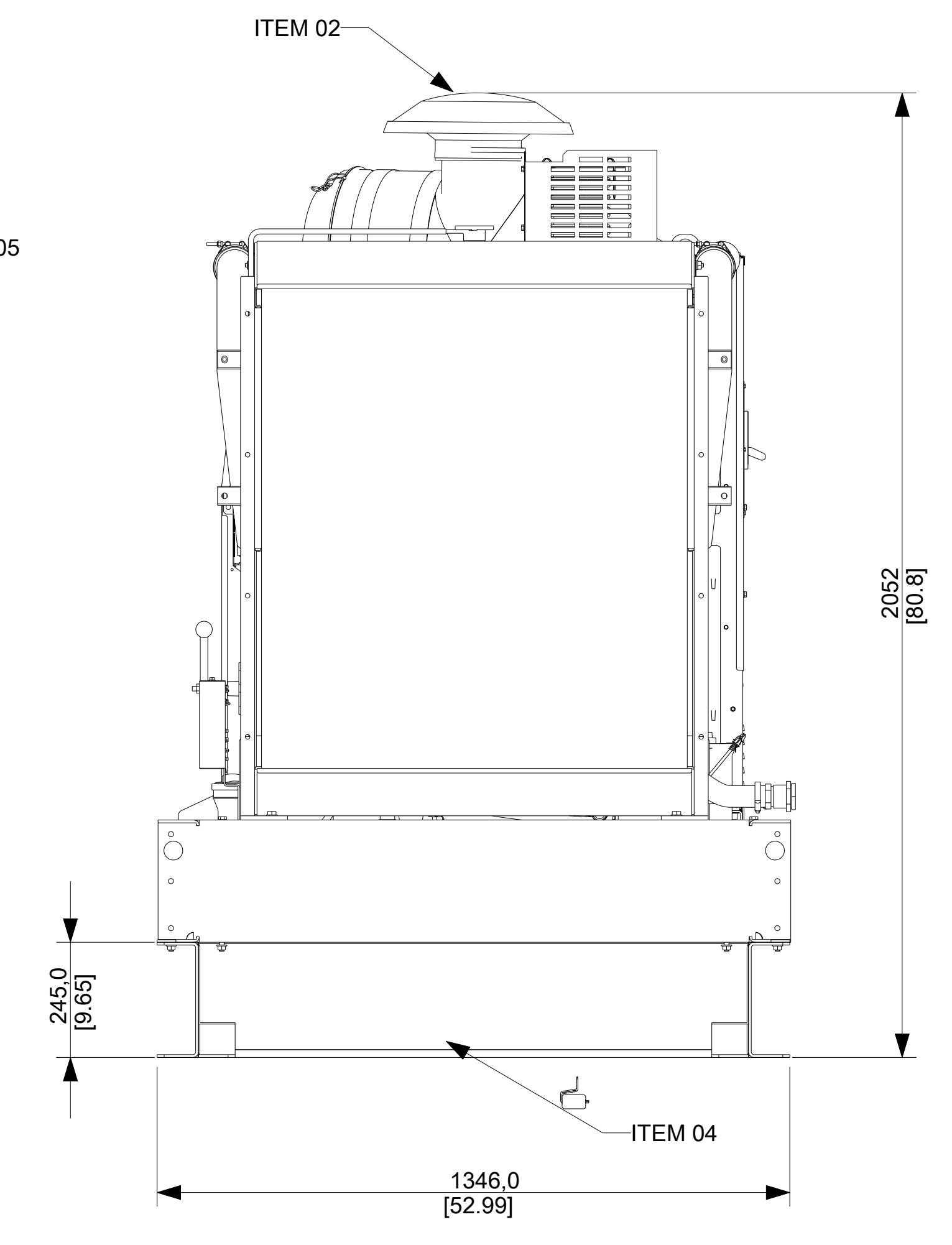
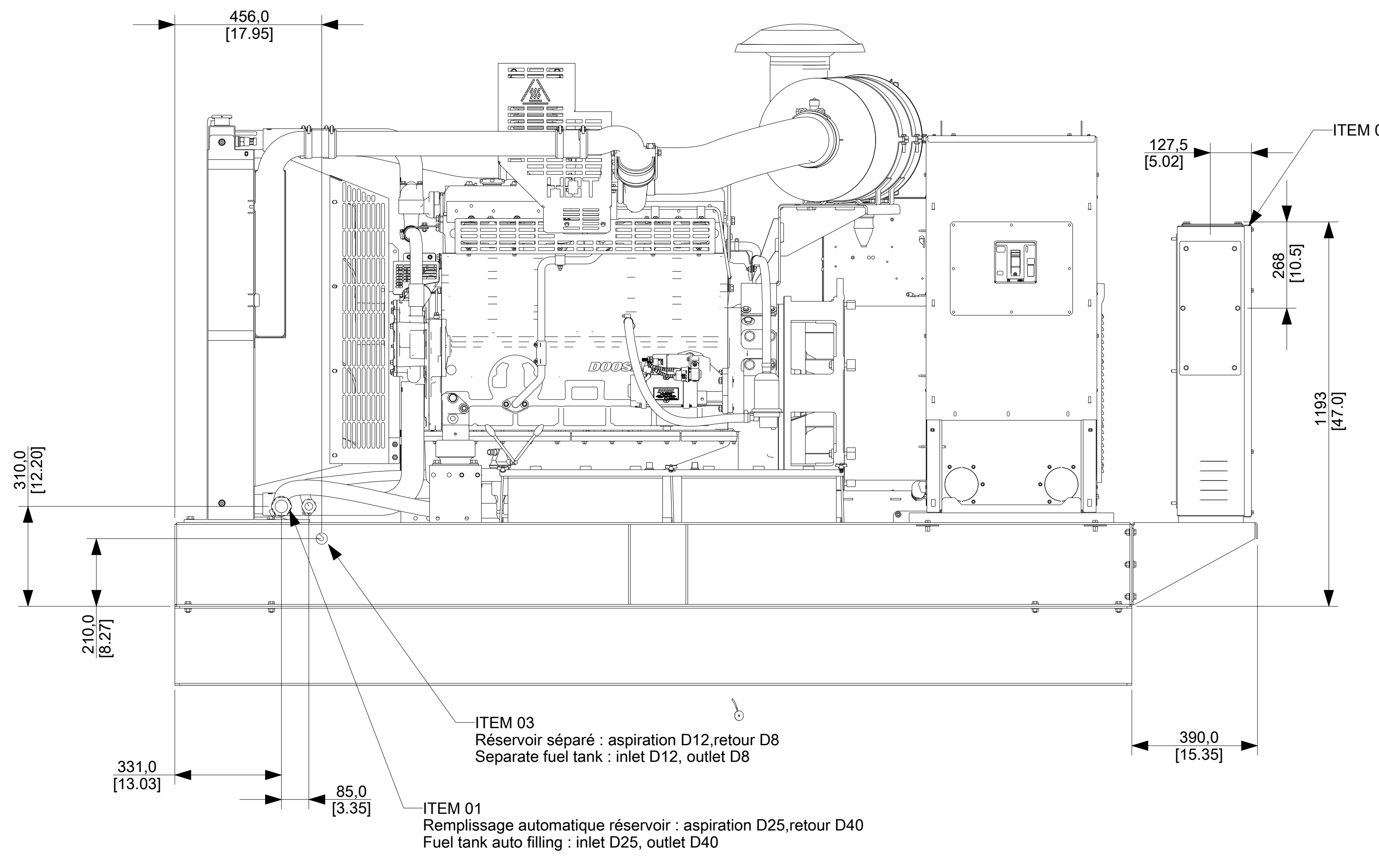
REV	DATE	ON COMPOSITE DWGS. SEE PART NO. FOR REVISION LEVEL	BY	DO NOT SCALE. REFERENCE THE MODEL FOR ALL UNSPECIFIED DIMENSIONS
-	07/06/22	NEW DRAWING	SP	UNLESS OTHERWISE SPECIFIED - 1) DIMENSIONS ARE IN MILLIMETERS 2) TOLERANCES ARE: NF ISO 1300-6 A E
A	14/03/24	UPDATE	SP	

APPROVALS: P. SIMON, DATE: 14-Mar-24, CAD NO.: 30001543901, SCALE: 1:10, SHEET: 1 of 3, REV: A, SIZE: A0, DWG NO.: 30001543901

KOHLER 270 rue de Kerenen - 29490 Guipavas CS 40407 - 29801 Brest Cedex 9 - France

THIS DRAWING IS UNDER PROPERTY OF THE COMPANY. IT CANNOT PRINTED, USED OR COMMUNICATED WITHOUT ITS AUTHORIZATION.

TITLE: PLAN-GE -DO-P126TI/TI-II EX2-



INFORMATIONS SUPPLEMENTAIRES / ADDITIONAL INFORMATION	ITEM
KIT REMPLISSAGE FUEL AUTOMATIQUE / AUTOMATIQUE FUEL FILL KIT	01
FILTRE A AIR AMBIANCE POUSSIEREUSE / HEAVY DUTY AIR FILTER	02
RACCORDEMENT FUEL SEPARÉ / FUEL CONNECTION	03
BAC DE RETENTION / RETENTION BUND	04
BORNIER UK / UK TERMINAL BLOCK	05

CET ASSEMBLAGE OU PIECE DOIT ETRE CONFORME A LA SPECIFICATION PEP-RML-001
THIS ASSEMBLY OR PART MUST COMPLY WITH SPECIFICATION PEP-RML-001

REV	DATE	ON COMPOSITE DWGS. SEE PART NO. FOR REVISION LEVEL	BY	DO NOT SCALE. REFERENCE THE MODEL FOR ALL UNSPECIFIED DIMENSIONS
-	07/06/22	NEW DRAWING	SP	UNLESS OTHERWISE SPECIFIED - 1) DIMENSIONS ARE IN MILLIMETERS 2) TOLERANCES ARE: NF 501300-6 A-E
A	14/03/24	UPDATE	SP	

270 rue de Kerenem - 29490 Guipavas
CS 4047 - 29511 Brest Cedex 9 - France

KOHLER.

THIS DRAWING IS UNDER PROPERTY OF THE COMPANY.
IT CANNOT BE PRINTED, USED OR COMMUNICATED WITHOUT ITS AUTHORIZATION.

TITLE: **PLAN-GE -DO-P126TI/TI-II EX2-**

SCALE: 1:10

CAD NO: 30001543901

DWG NO: 30001543901

REVISIONS:

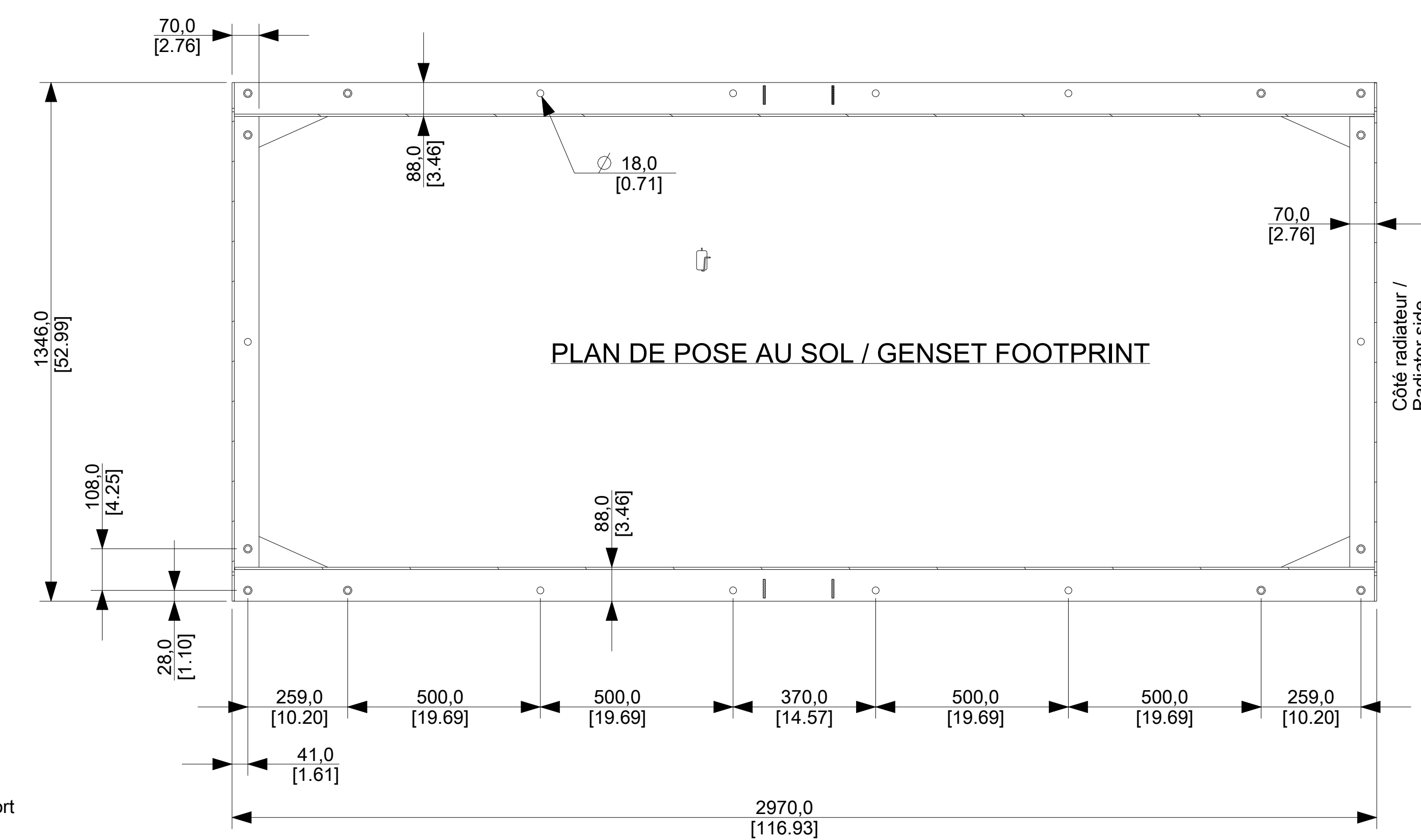
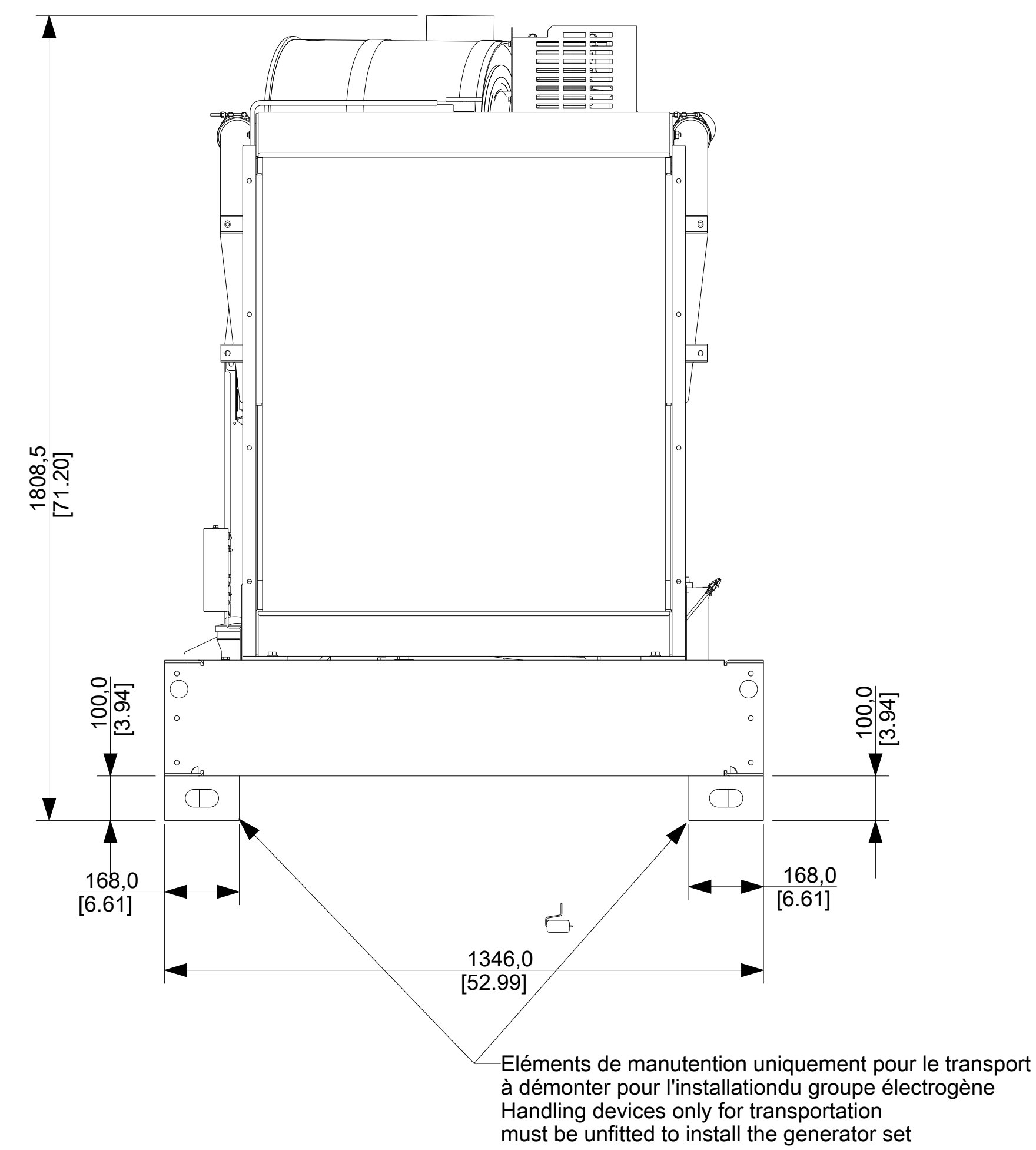
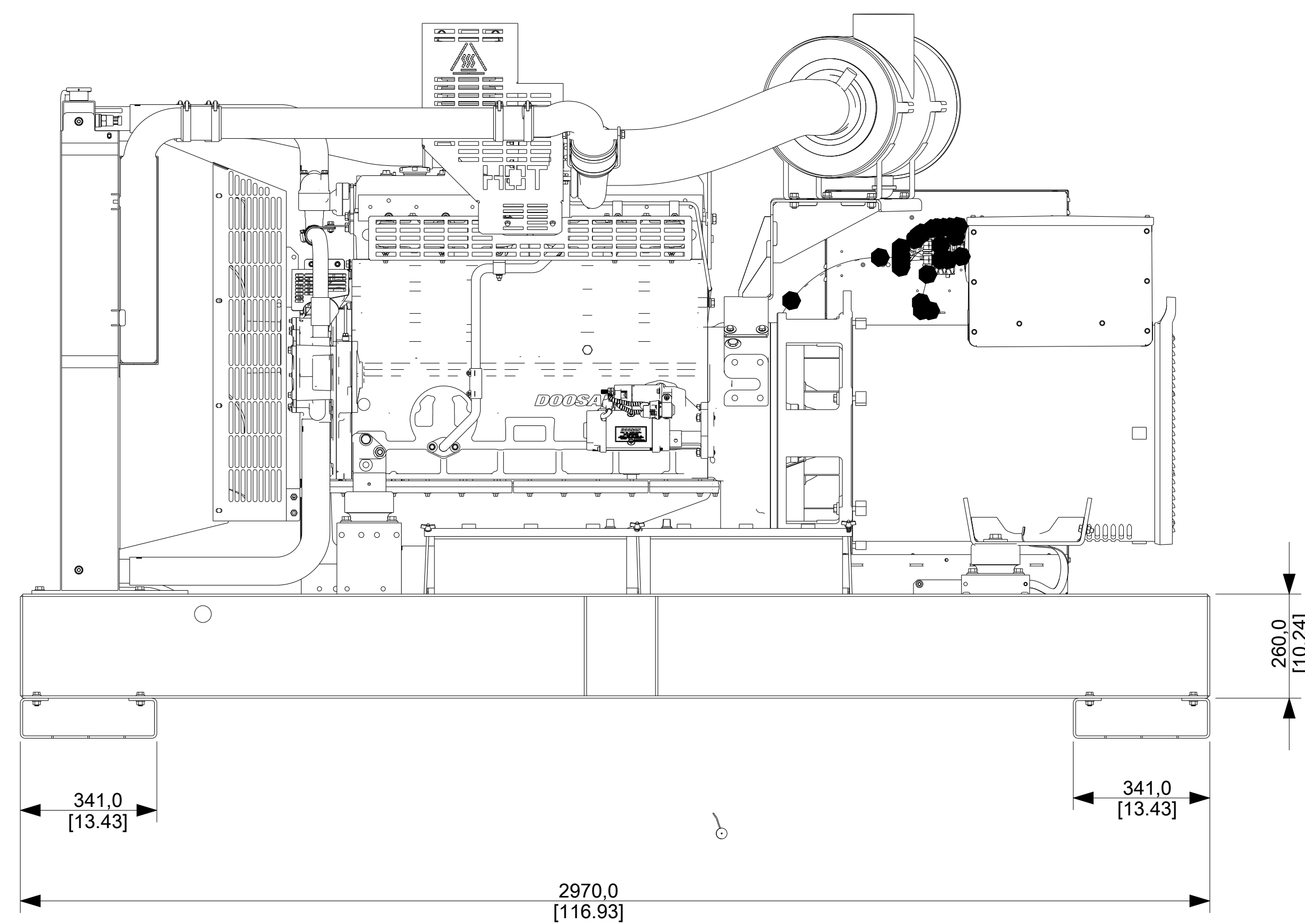
REV	DATE	BY	DESCRIPTION

2/3

A0

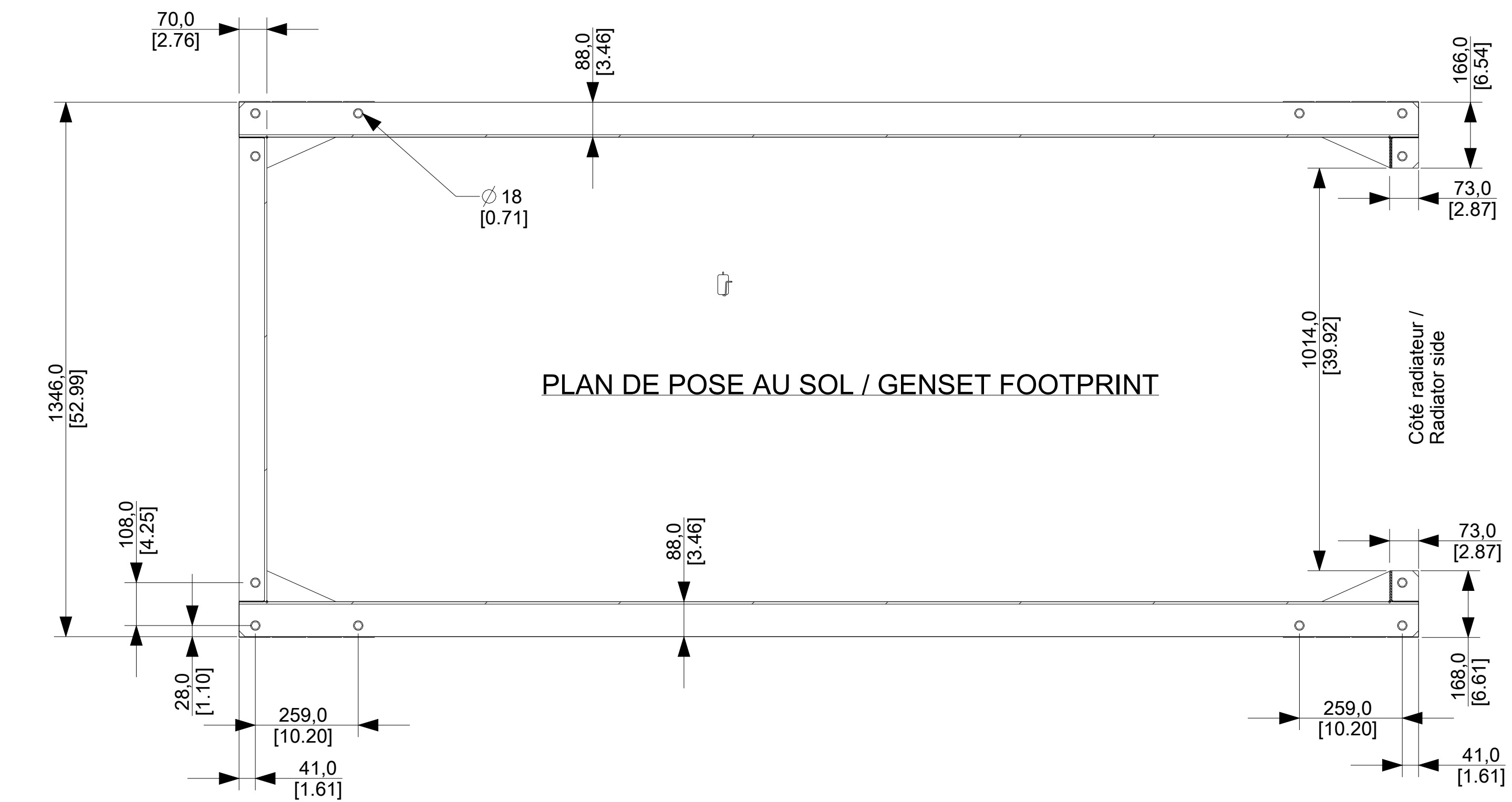
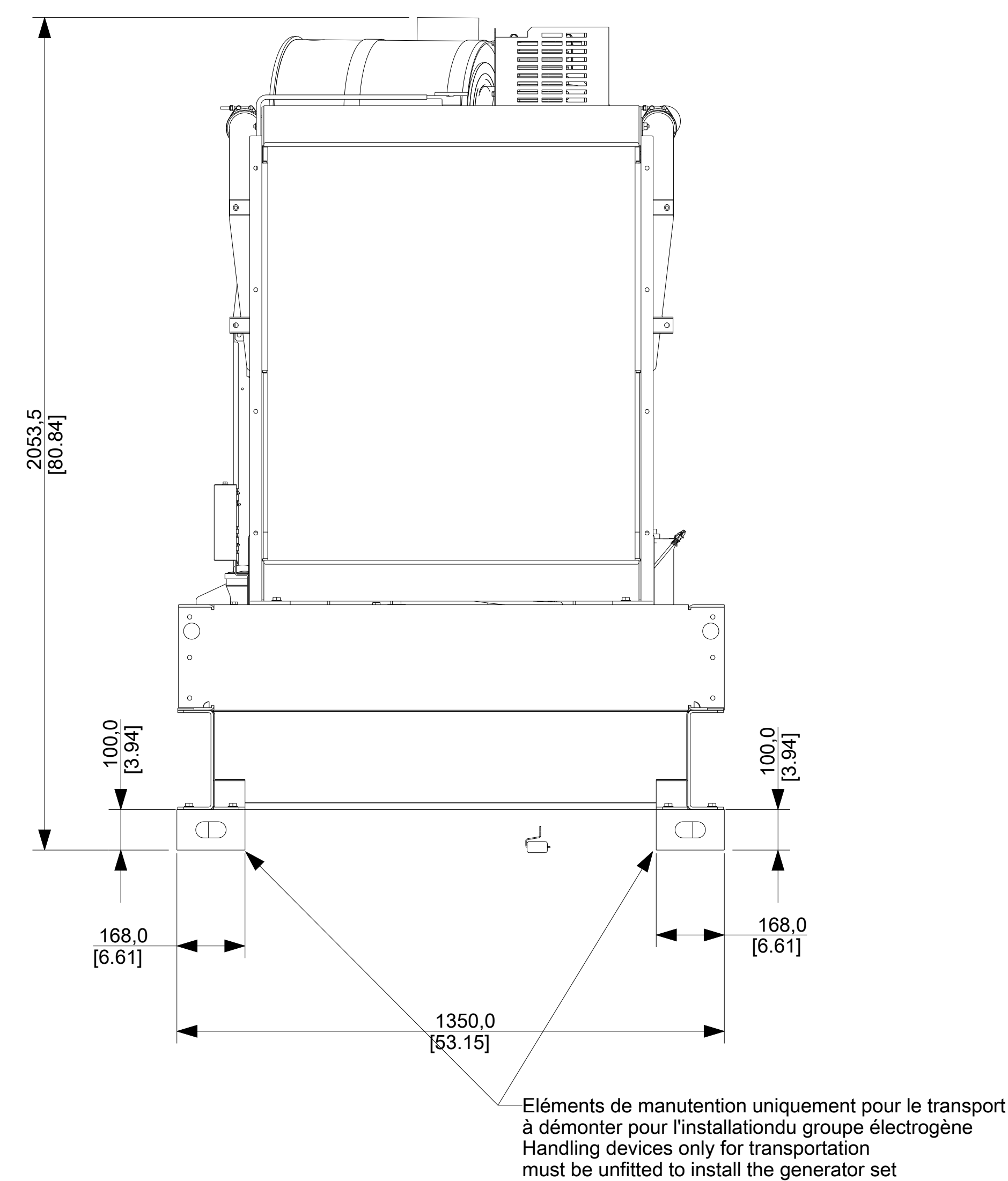
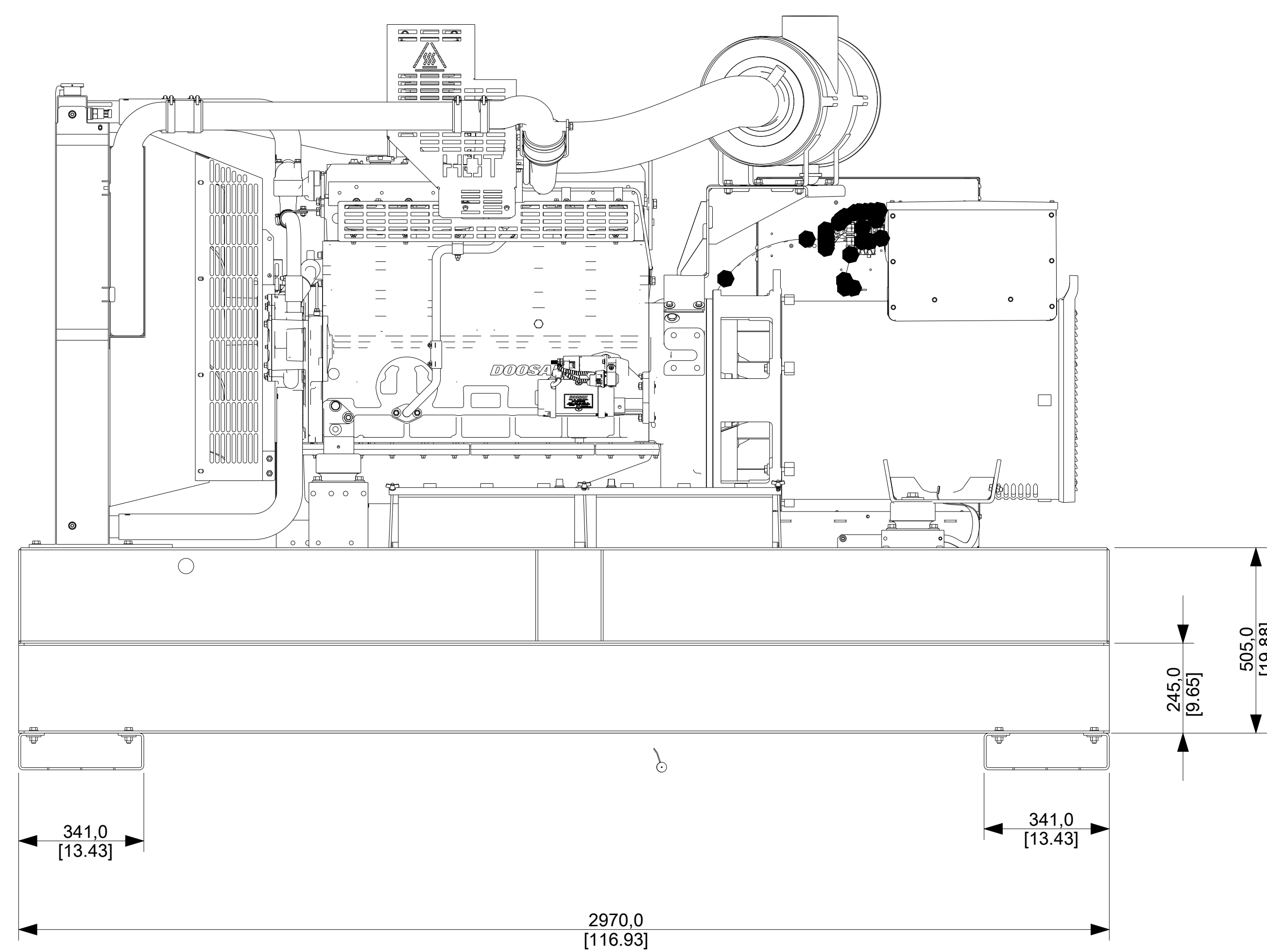
Dimensions de transport / Delivery size

Version châssis avec ou sans réservoir -> Sans bac de rétention
 With or without tank frame version -> Without retention bund



Dimensions de transport / Delivery size

Version châssis avec ou sans réservoir -> Avec bac de rétention
 With or without tank frame version -> With retention bund



REV	DATE	ON COMPOSITE DWGS. SEE PART NO. FOR REVISION LEVEL	BY	DO NOT SCALE. REFERENCE THE MODEL FOR ALL UNSPECIFIED DIMENSIONS
-	07/06/22	NEW DRAWING	SP	UNLESS OTHERWISE SPECIFIED - 1) DIMENSIONS ARE IN MILLIMETERS 2) TOLERANCES ARE: NF ISO1300-A4-E
A	14/03/24	UPDATE	SP	

APPROVALS	DATE	CAD NO: 30001543901	SCALE: 1:10	SHEET: 3 of 3
DESIGN: P. SIMON	14-Mar-24			
CHECKED: ---				
APPROVED: ---		DWG NO: 30001543901	REV: ---	SIZE: A0

CET ASSEMBLAGE OU PIECE DOIT ETRE CONFORME A LA SPECIFICATION PEP-RML-001
 THIS ASSEMBLY OR PART MUST COMPLY WITH SPECIFICATION PEP-RML-001

UNLESS OTHERWISE SPECIFIED -
 1) DIMENSIONS ARE IN MILLIMETERS
 2) TOLERANCES ARE: NF ISO1300-A4-E

KOHLER. 270 rue de Kerenem - 29490 Guipavas
 CS 40047 - 29011 Brest Cedex 3 - France

THIS DRAWING IS UNDER PROPERTY OF THE COMPANY.
 IT CANNOT PRINTED, USED OR COMMUNICATED WITHOUT ITS AUTHORIZATION.

TITLE: **PLAN-GE -DO-P126TI/TI-II EX2-**