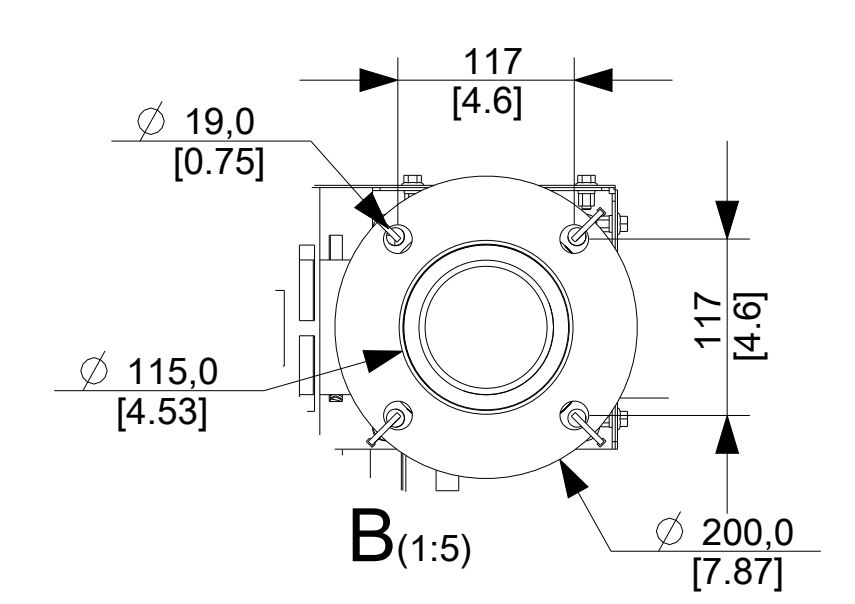


SORTIE ECHAPPEMENT / EXHAUST OUTLET
(Détail contre-bride / counter flange detail)



MOTEUR / ENGINE	ALTERNATEUR / ALTERNATOR	MASSE / WEIGHT (kg / lbs) +/- 5%		COG (mm / inch) A vide / Dry		COG (mm / inch) OdM / Wet	
		A vide / Dry	OdM / Wet	CG Horizontal	CG Vertical	CG Horizontal	CG Vertical
DOOSAN DP180LA	KH3546T	5179 / 11417	7274 / 16036	3315 / 130.51	855 / 33.66	3252 / 128.03	899 / 35.39
DOOSAN DP180LA	KH02954T	4953 / 10919	7047 / 15535	3273 / 128.85	848 / 33.38	3220 / 126.77	895 / 35.23
DOOSAN DP180LA	KH02713T	4871 / 10738	6965 / 15355	3263 / 128.46	845 / 33.26	3212 / 126.45	894 / 35.19

Voir folios suivants pour informations complémentaires / See following sheets for additional informations.

CET ASSEMBLAGE OU PIECE DOIT ETRE CONFORME A LA SPECIFICATION PEP-RML-001
THIS ASSEMBLY OR PART MUST COMPLY WITH SPECIFICATION PEP-RML-001

REV	DATE	ON COMPOSITE DWGS. SEE PART NO. FOR REVISION LEVEL	BY	DO NOT SCALE. REFERENCE THE MODEL FOR ALL UNSPECIFIED DIMENSIONS
-	07/06/22	NEW DRAWING	SP	UNLESS OTHERWISE SPECIFIED - 1) DIMENSIONS ARE IN MILLIMETERS 2) TOLERANCES ARE: NF ISO1300-6-AE
A	14/03/24	UPDATE	SP	
A	14/03/24			

APPROVALS DATE: 14-Mar-24
DRAWN: P. SIMON
CHECKED: [Signature]
APPROVED: [Signature]

TITLE: 30001546401
CAD NO: 30001546401
DWG NO: 30001546401

SCALE: 1:10
SHEET: 1 of 3
REV: [Signature]
SIZE: A
A0

270 rue de Kerenem - 29490 Guipavas
CS 40047 - 29501 Brest Cedex 9 - France

THIS DRAWING IS UNDER PROPERTY OF THE COMPANY.
IT CANNOT BE PRINTED, USED OR COMMUNICATED WITHOUT ITS AUTHORIZATION.

