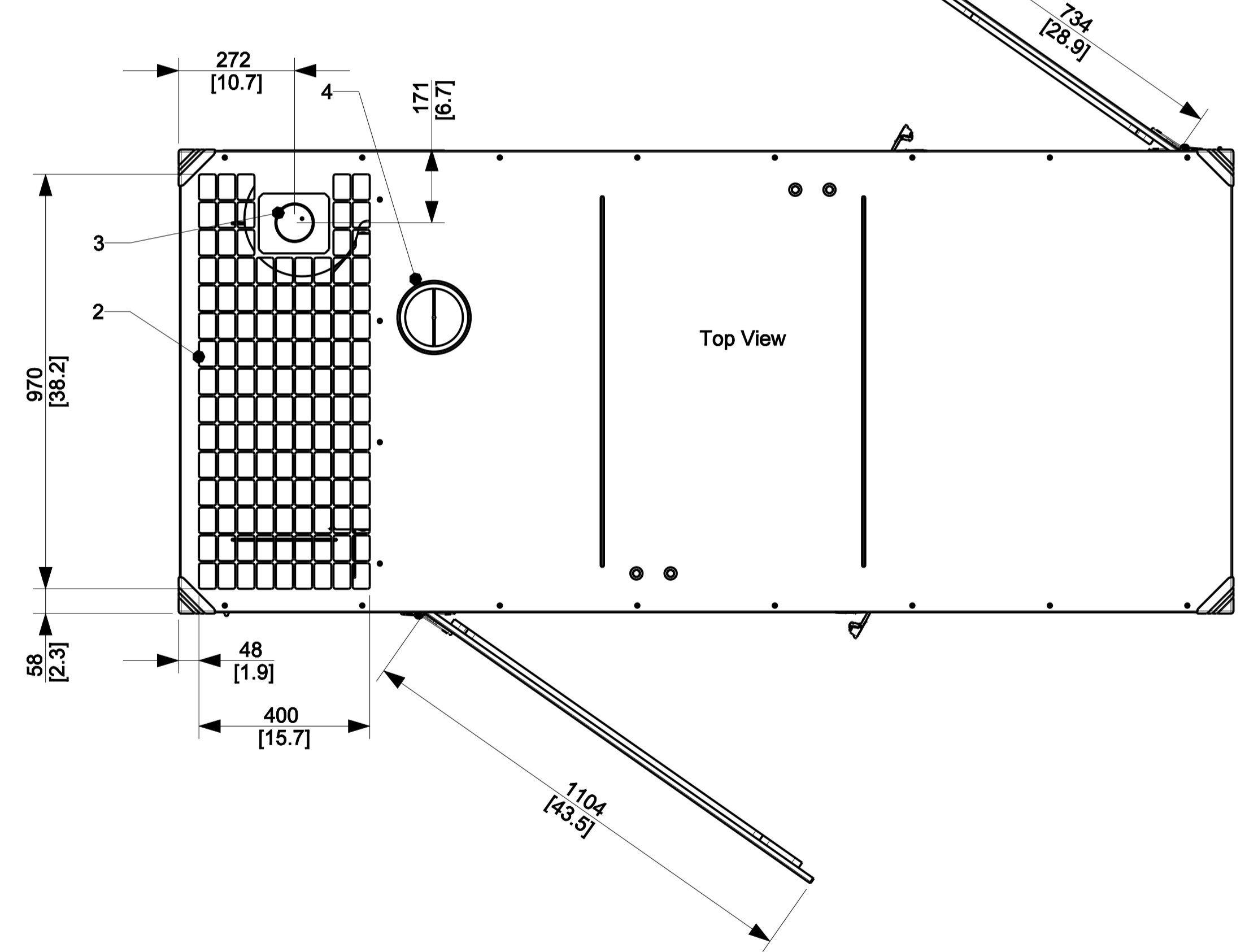
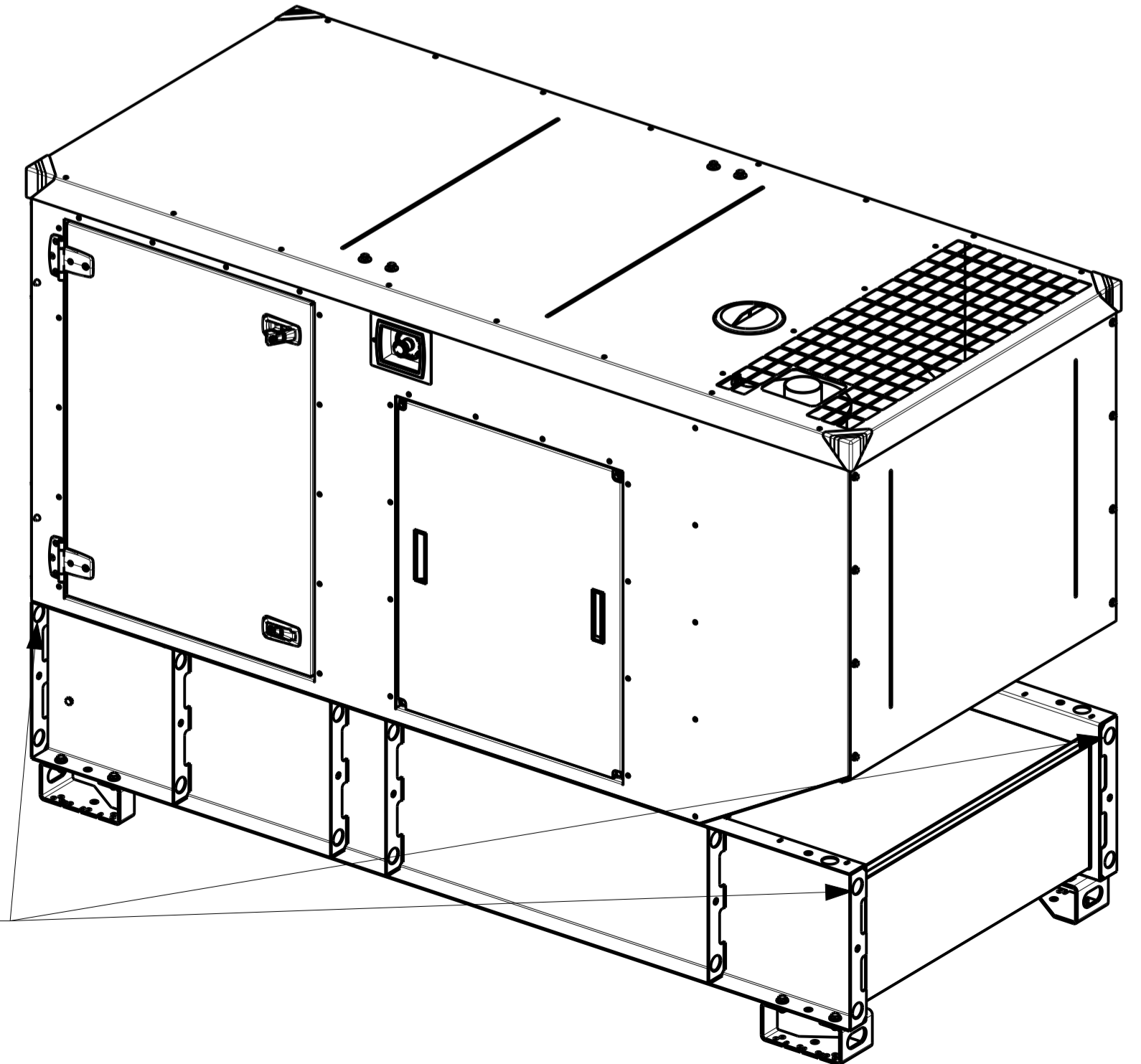


PIEDS DE TRANSPORT A DEMONTER AVANT INSTALLATION  
TRANSPORT FEET TO BE REMOVED BEFORE INSTALLATION



COUPE A-A



9	Porte accès carburant et maintenance Fuel and maintenance access door
8	Panneau démontable Removable panel
7	Porte accès pupitre Control panel access door
6	Passe câbles vers coffret puissance Ø90 Wires crossing toward power control Ø3.24
5	Arrêt d'urgence Emergency stop
4	Remplissage liquide de refroidissement Coolant filling
3	Sortie échappement Ø76 Exhaust outlet Ø2.99
2	Rejet d'air Air outlet
1	Entrée d'air Air inlet
REP	

MOTEUR ENGINE	ALTERNATEUR / ALTERNATOR	MASSE / WEIGHT (kg / lbs) +/- 5%		COG (mm / inch) Odm / Wet	
		A vide / Dry	OdM / Wet	CG Horizontal	CG Vertical
KD39L04T-AW	KH00592T	1450 / 3197	1910 / 4211	1270 / 50	630 / 25
	KH00593T	1450 / 3197	1910 / 4211	1270 / 50	630 / 25
	KH00755T	1480 / 3263	1940 / 4277	1280 / 50	630 / 25
KD39L04T-AA	KH00811T	1380 / 3042	1840 / 4057	1240 / 49	630 / 25
	KH00754T	1500 / 3307	1960 / 4321	1270 / 50	630 / 25
	KH01053T	1570 / 3461	2030 / 4475	1300 / 51	640 / 25

ATTENTION !! LA MANUTENTION DU GROUPE DOIT ETRE FAITE SANS LE PLEIN DE FUEL  
WARNING !! HANDLING OF GENSET MUST BE MADE WITHOUT FUEL

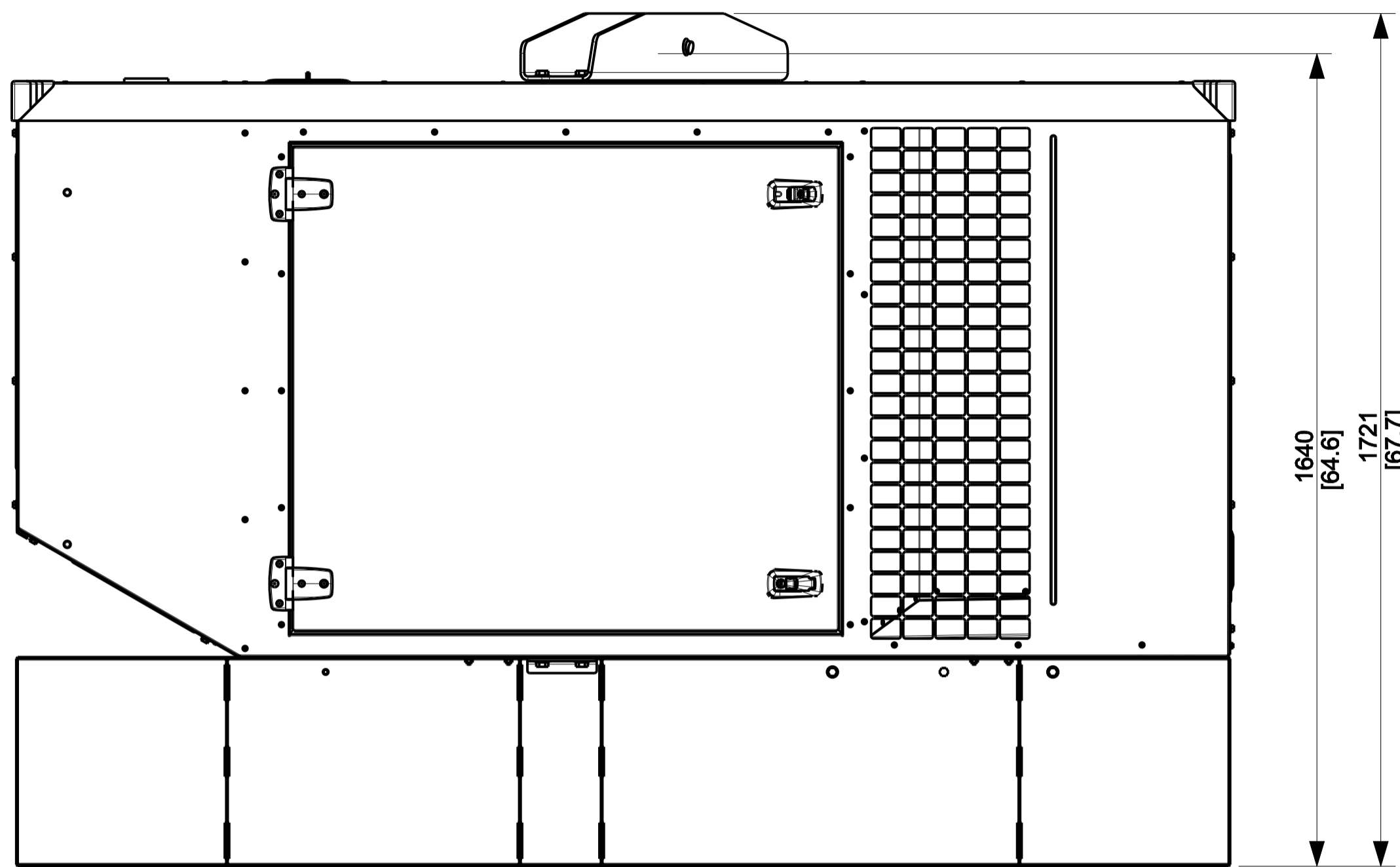
Ce plan vous est remis à titre indicatif et peut être révisé sans préavis.  
This drawing is for informational purposes only and maybe changed without notice.

REV	DATE	ON COMPOSITE DWGS, SEE PART NO. FOR REVISION LEVEL C1 INDICATES PART NUMBERS AFFECTED BY LATEST DRAWING REVISION	BY	THIS ASSEMBLY OR PART MUST COMPLY WITH PEP-RML-001. REFERENCE CAD MODEL FOR UNSPECIFIED DIMENSIONS.	rehlko
-	02SEP2025	RELEASE FOR PRODUCTION	STN		
A	02OCT2025	Add Nota concerning lifting without fuel	MF		
B	30OCT2025	Update alternators references	MF		
		UNLESS OTHERWISE SPECIFIED: 1) DIMENSIONS ARE IN MILLIMETERS 2) TOLERANCES: NF 9013650-CLA E			
		SCALE: 1:10 SHEET SIZE: A1			
		TITLE: DIMENSION PRINT, M147 CANOPY, DW24H			
		DRAWN: STN DATE: 02SEP2025			
		APPROVED: SEE PLM SYSTEM			
		DWG NO. 30001570101			

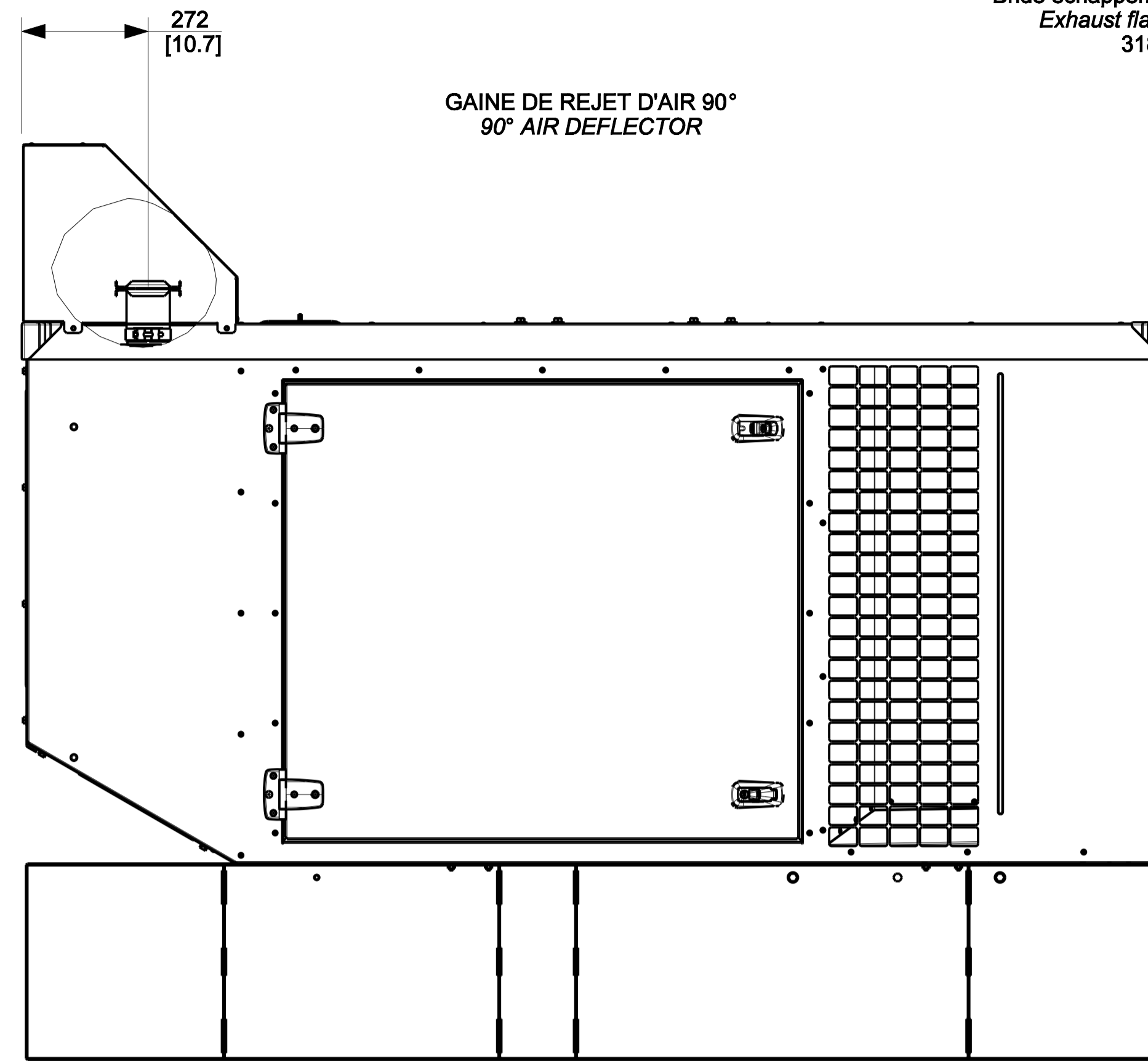
THIS DRAWING IN DESIGN AND DETAIL IS BOMI INDUSTRIES PROPERTY AND MUST NOT BE USED EXCEPT IN CONNECTION WITH BOMI INDUSTRIES WORK. ALL RIGHTS OF DESIGN OR INVENTION ARE RESERVED.

ARCEAU DE LEVAGE CENTRAL  
CENTRAL LIFTING ROLLBAR

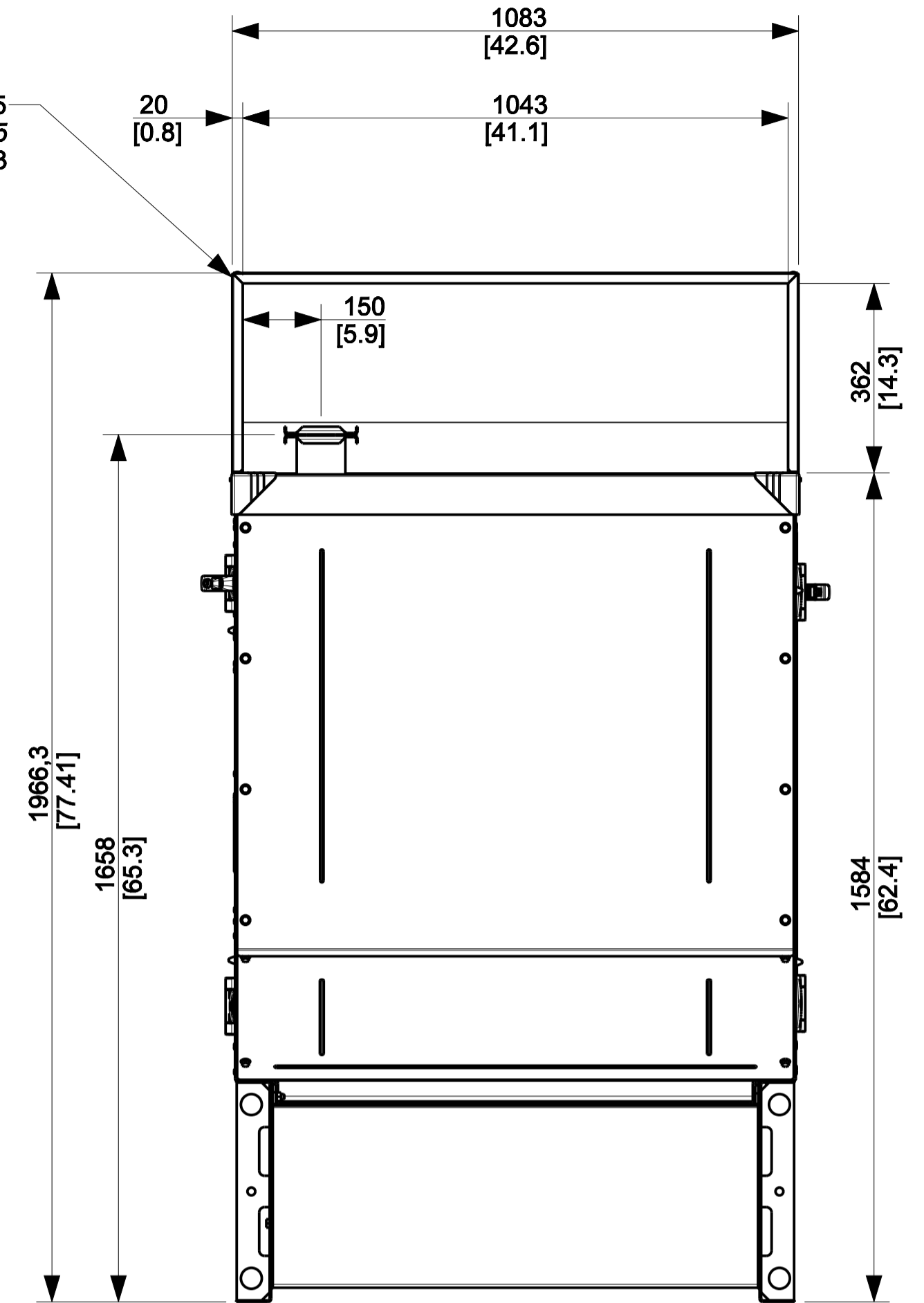
Masse: 25kg  
weight: 55.11 lbs



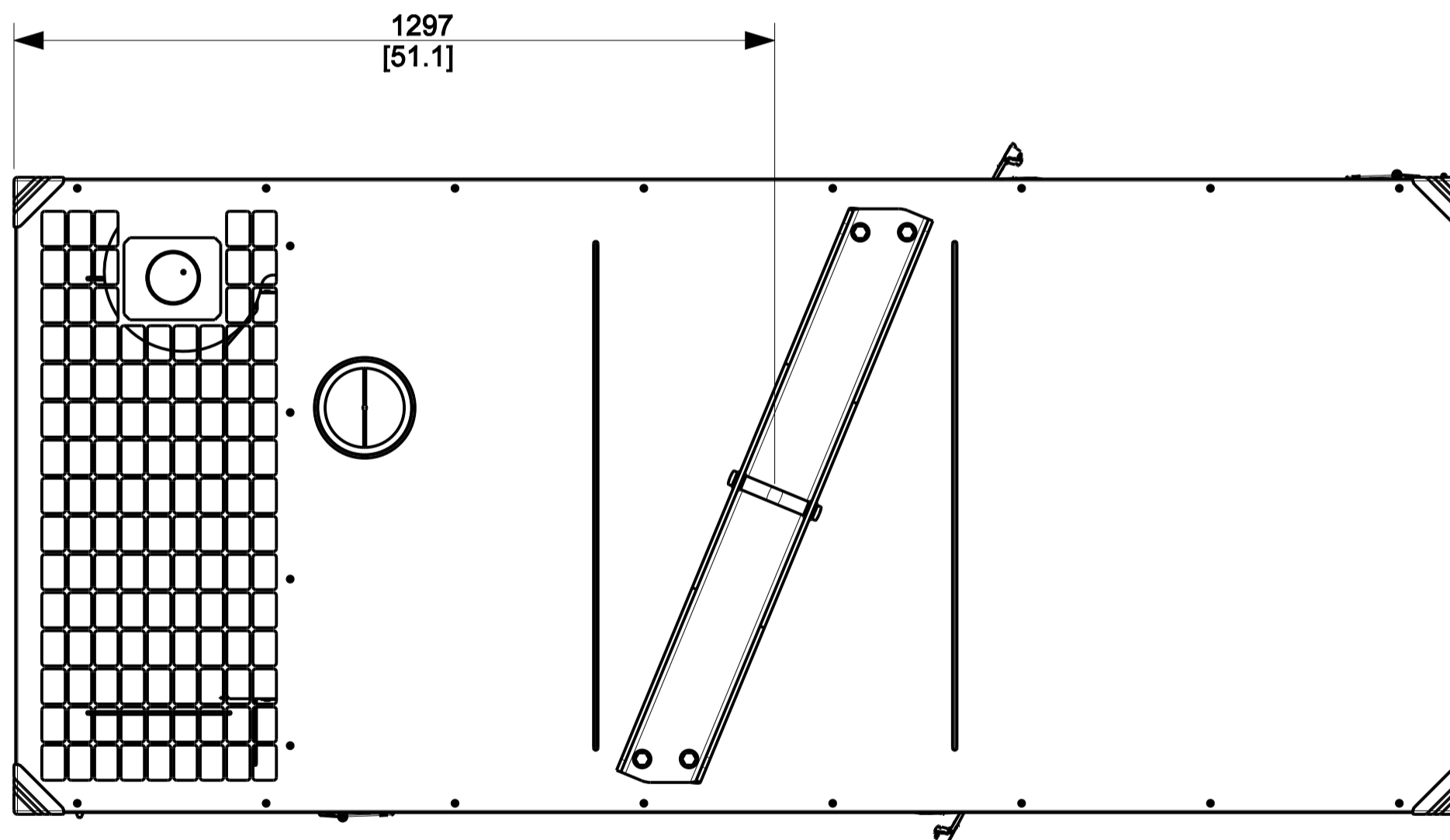
GAINÉ DE REJET D'AIR 90°  
90° AIR DEFLECTOR



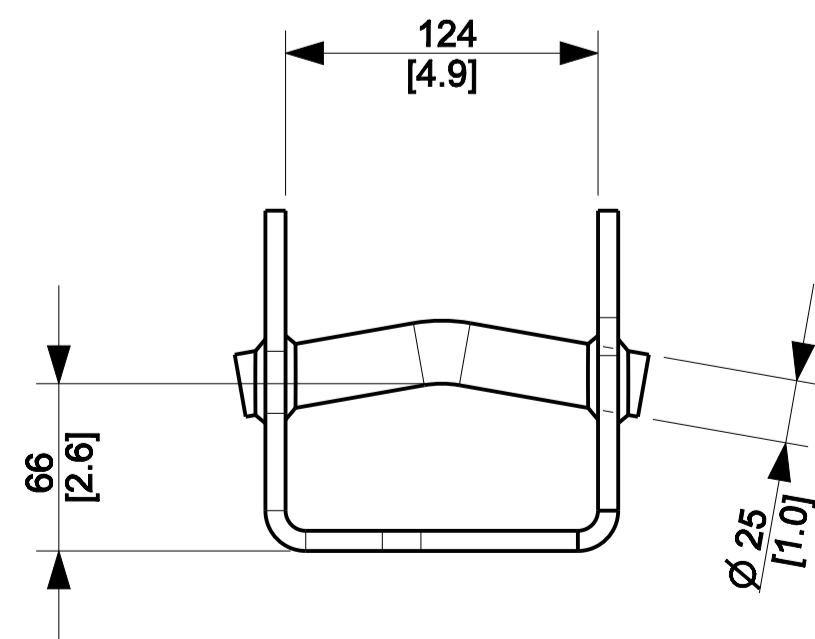
Bride échappement DN 65  
Exhaust flange DN 65  
31800003503



SECTION B-B



Détail point de levage  
(Lifting base detail)



ATTENTION !! LA MANUTENTION DU GROUPE DOIT ETRE FAITE SANS LE PLEIN DE FUEL  
WARNING !! HANDLING OF GENSET MUST BE MADE WITHOUT FUEL

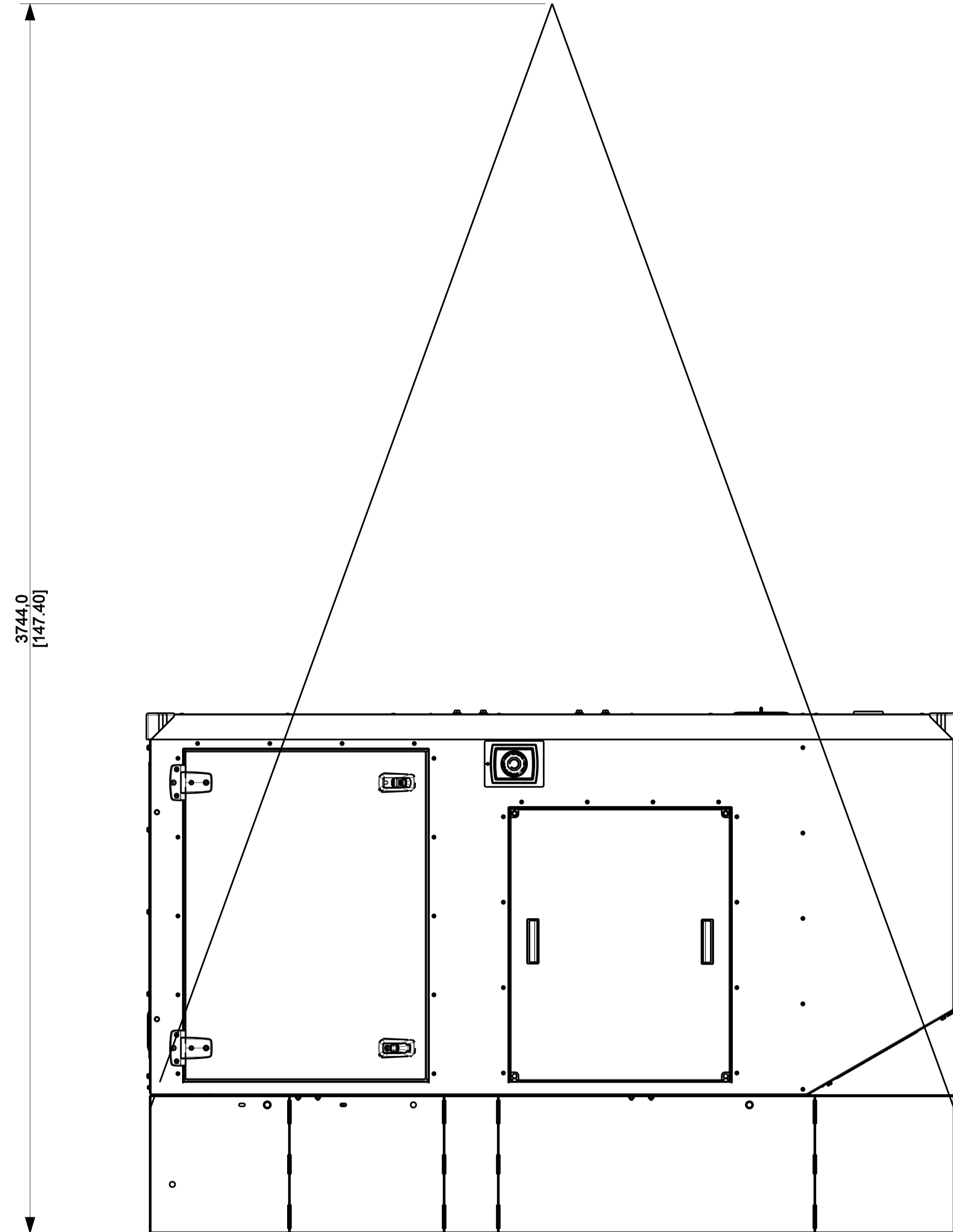
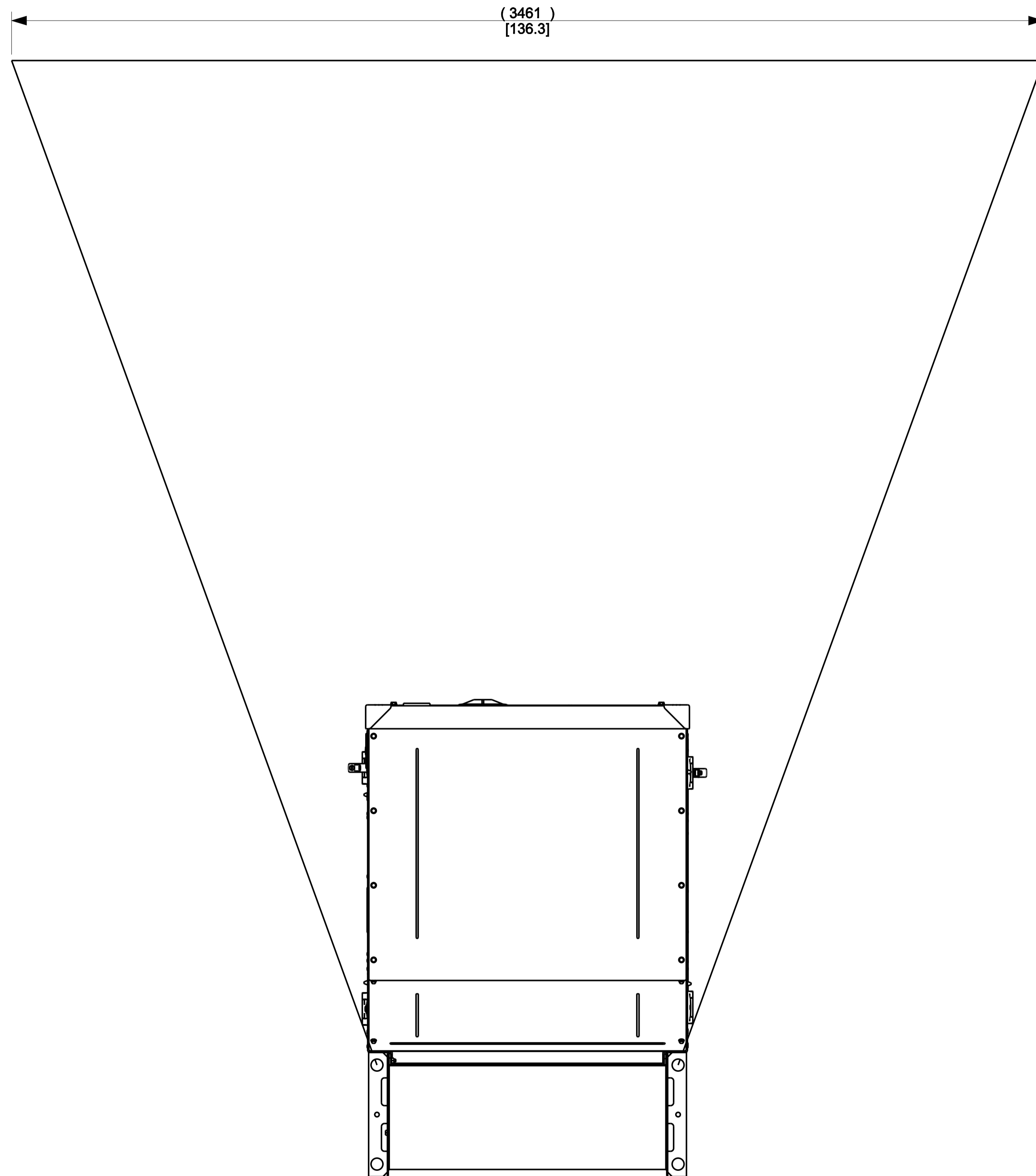
Ce plan vous est remis à titre indicatif et peut être révisé sans préavis.  
This drawing is for informational purposes only and maybe changed whitout notice.

ON COMPOSITE DWGS, SEE PART NO. FOR REVISION LEVEL □ INDICATES PART NUMBERS AFFECTED BY LATEST DRAWING REVISION		DO NOT SCALE THIS ASSEMBLY OR PART MUST COMPLY WITH PEP-RM-001. REFERENCE CAD MODEL FOR UNSPECIFIED DIMENSIONS.		
REV	DATE	BY	DESCRIPTION	
-	02SEP2025	STN	RELEASE FOR PRODUCTION	
A	02OCT2025	MF	Add Nota concerning lifting without fuel	
B	30OCT2025	MF	Update alternators references	
UNLESS OTHERWISE SPECIFIED: 1) DIMENSIONS ARE IN MILLIMETERS 2) TOLERANCES: NF ISO13959-CLA E				MAJOR □ = 0 CRITICAL □ = 0 CHARACTERISTICS COMPLY WITH IFS-80032
SCALE: 1:10 SHEET SIZE: A1 TITLE: DIMENSION PRINT, M147 CANOPY, DW24H				FIRST ANGLE PROJECTION SHEET: 2 OF 3
DRAWN: STN DATE: 02SEP2025		APPROVED: SEE PLM SYSTEM		DWG NO.: 30001570101
THIS DRAWING IN DESIGN AND DETAIL IS SOMO INDUSTRIES PROPERTY AND MUST NOT BE USED EXCEPT IN CONNECTION WITH SOMO INDUSTRIES WORK. ALL RIGHTS OF DESIGN OR INVENTION ARE RESERVED.				

LIFTING WITHOUT CENTRAL LIFTING ROLLBAR

FRONT VIEW

RIGHT VIEW



ATTENTION !! LA MANUTENTION DU GROUPE DOIT ETRE FAITE SANS LE PLEIN DE FUEL  
 WARNING !! HANDLING OF GENSET MUST BE MADE WITHOUT FUEL

Ce plan vous est remis à titre indicatif et peut être révisé sans préavis.  
 This drawing is for informational purposes only and maybe changed whitout notice.

REV	DATE	ON COMPOSITE DWGS, SEE PART NO. FOR REVISION LEVEL. C1 INDICATES PART NUMBERS AFFECTED BY LATEST DRAWING REVISION	BY	THIS ASSEMBLY OR PART MUST COMPLY WITH PEP-RM-001. REFERENCE CAD MODEL FOR UNSPECIFIED DIMENSIONS.	
-	02SEP2025	RELEASE FOR PRODUCTION	STN		
A	02OCT2025	Add Nota concerning lifting without fuel	MF		MAJOR 0 CRITICAL 0 CHARACTERISTICS COMPLY WITH XPS-0002
B	30OCT2025	Update alternators references	MF		UNLESS OTHERWISE SPECIFIED: 1) DIMENSIONS ARE IN MILLIMETERS 2) TOLERANCES: NF 9013650 CLA E
				SCALE: 1:10	SHEET SIZE: A1
				SHEET: 3 OF 3	
				TITLE: DIMENSION PRINT, M147 CANOPY, DW24H	
				DWG NO. 30001570101	
				DRAWN: STN DATE: 02SEP2025	
				APPROVED: SEE PLM SYSTEM	
THIS DRAWING IN DESIGN AND DETAIL IS SOMO INDUSTRIES PROPERTY AND MUST NOT BE USED EXCEPT IN CONNECTION WITH SOMO INDUSTRIES WORK. ALL RIGHTS OF DESIGN OR INVENTION ARE RESERVED.					